

For Research Use Only

# TACC3 Polyclonal antibody

Catalog Number: 25697-1-AP

Featured Product

5 Publications



## Basic Information

**Catalog Number:**

25697-1-AP

**Size:**

550 µg/ml

**Source:**

Rabbit

**Isotype:**

IgG

**Immunogen Catalog Number:**

AG22516

**GenBank Accession Number:**

BC111771

**GeneID (NCBI):**

10460

**UNIPROT ID:**

Q9Y6A5

**Full Name:**

transforming, acidic coiled-coil containing protein 3

**Calculated MW:**

838 aa, 91 kDa

**Observed MW:**

130 kDa

**Purification Method:**

Antigen affinity purification

**Recommended Dilutions:**

WB 1:500-1:3000

IHC 1:20-1:200

IF 1:200-1:800

## Applications

**Tested Applications:**

IF/ICC, IHC, WB, ELISA

**Cited Applications:**

WB, IF, IHC

**Species Specificity:**

human

**Cited Species:**

human, mouse

**Note-IHC: suggested antigen retrieval with TE buffer pH 9.0; (\*) Alternatively, antigen retrieval may be performed with citrate buffer pH 6.0**

**Positive Controls:**

WB : HeLa cells,

IHC : human cervical cancer tissue, human testis tissue

IF : HeLa cells,

## Background Information

TACC3, also known as ERIC 1, belongs to the TACC family. TACC family members TACC1, TACC2, and TACC3 map very closely to the corresponding FGFR1, FGFR2, FGFR3 genes on chromosomes 8, 10, and 4. Subsequently, since they are phylogenetically related, it is proposed that TACC and FGFR have similar roles in cell growth and differentiation. It plays a role in the microtubule-dependent coupling of the nucleus and the centrosome and involved in the processes that regulate centrosome-mediated interkinetic nuclear migration (INM) of neural progenitors. This antibody works well in WB, IHC and IF application.

## Notable Publications

| Author      | Pubmed ID | Journal        | Application |
|-------------|-----------|----------------|-------------|
| Yong Du     | 27248823  | Oncotarget     | WB,IHC      |
| Zhi-Rui Lin | 29358577  | Cell Death Dis | WB          |
| Saimeng Shi | 38012214  | Cell Death Dis | WB,IHC,IF   |

## Storage

**Storage:**

Store at -20°C. Stable for one year after shipment.

**Storage Buffer:**

PBS with 0.02% sodium azide and 50% glycerol pH 7.3.

Aliquoting is unnecessary for -20°C storage

For technical support and original validation data for this product please contact:

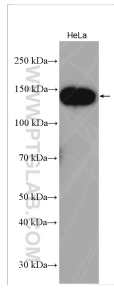
T: 4006900926

E: Proteintech-CN@ptglab.com

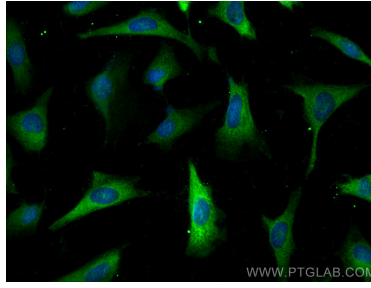
W: ptgcn.com

**This product is exclusively available under Proteintech Group brand and is not available to purchase from any other manufacturer.**

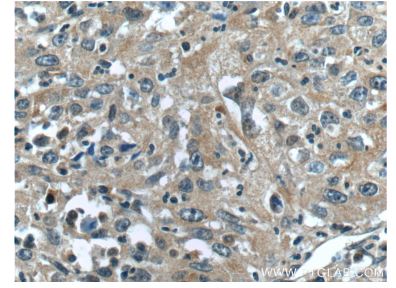
## Selected Validation Data



HeLa cells were subjected to SDS PAGE followed by western blot with 25697-1-AP (TACC3 antibody) at dilution of 1:1500 incubated at room temperature for 1.5 hours.



Immunofluorescent analysis of (-20°C Methanol) fixed HeLa cells using TACC3 antibody (25697-1-AP) at dilution of 1:400 and CoraLite® 488-Conjugated AffiniPure Goat Anti-Rabbit IgG(H+L).



Immunohistochemical analysis of paraffin-embedded human cervical cancer tissue slide using 25697-1-AP (TACC3 Antibody) at dilution of 1:50 (under 40x lens).