

# G6PD Polyclonal antibody

Catalog Number: 25413-1-AP

Featured Product

37 Publications

## Basic Information

**Catalog Number:**

25413-1-AP

**Size:**

800 µg/ml

**Source:**

Rabbit

**Isotype:**

IgG

**Immunogen Catalog Number:**

AG21862

**GenBank Accession Number:**

BC000337

**GeneID (NCBI):**

2539

**UNIPROT ID:**

P11413

**Full Name:**

glucose-6-phosphate dehydrogenase

**Calculated MW:**

59 kDa

**Observed MW:**

59 kDa

**Purification Method:**

Antigen affinity purification

**Recommended Dilutions:**

WB 1:1000-1:5000

IHC 1:250-1:1000

IF 1:50-1:500

## Applications

**Tested Applications:**

IF/ICC, IHC, WB, ELISA

**Cited Applications:**

CoIP, IF, IHC, IP, WB

**Species Specificity:**

human

**Cited Species:**

human, rat, sheep, mouse

**Note-IHC: suggested antigen retrieval with TE buffer pH 9.0; (\*) Alternatively, antigen retrieval may be performed with citrate buffer pH 6.0**

**Positive Controls:**

WB : MCF-7 cells, HeLa cells, HEK-293 cells

IHC : human liver cancer tissue, human ovary tumor tissue

IF : HeLa cells,

## Background Information

G6PD (Glucose-6-phosphate 1-dehydrogenase) belongs to the glucose-6-phosphate dehydrogenase family. It is a housekeeping enzyme encoded in mammals by an X-linked gene. G6PD has important functions in intermediary metabolism because it catalyzes the first step in the pentose phosphate pathway and provides reductive potential in the form of NADPH. (PMID:7489710). This protein has 3 isoforms produced by alternative splicing.

## Notable Publications

Author	Pubmed ID	Journal	Application
Gongjun Wang	36248857	Front Immunol	IHC
Teresa W-M Fan	36150727	J Immunol	
Xiaohan Jin	36243112	J Biol Chem	WB

## Storage

**Storage:**

Store at -20°C. Stable for one year after shipment.

**Storage Buffer:**

PBS with 0.02% sodium azide and 50% glycerol pH 7.3.

Aliquoting is unnecessary for -20°C storage

For technical support and original validation data for this product please contact:

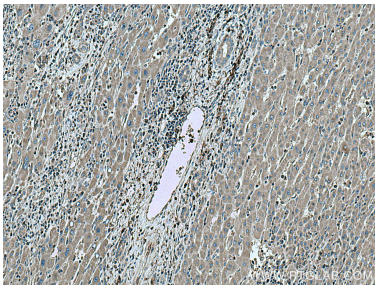
T: 4006900926

E: Proteintech-CN@ptglab.com

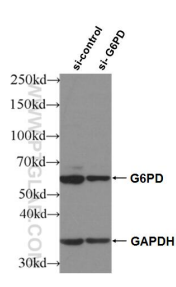
W: ptgcn.com

This product is exclusively available under Proteintech Group brand and is not available to purchase from any other manufacturer.

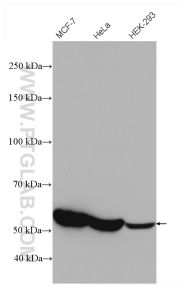
Selected Validation Data



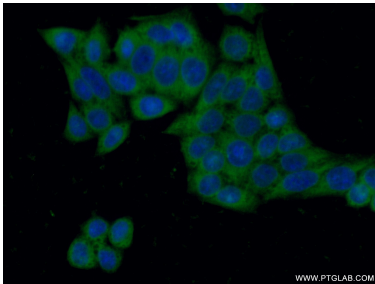
Immunohistochemical analysis of paraffin-embedded human liver cancer tissue slide using 25413-1-AP (G6PD antibody) at dilution of 1:500 (under 10x lens). Heat mediated antigen retrieval with Tris-EDTA buffer (pH 9.0).



WB result of G6PD antibody (25413-1-AP; 1:3000; incubated at room temperature for 1.5 hours) with sh-Control and sh-G6PD transfected HeLa cells.



MCF-7 cells were subjected to SDS PAGE followed by western blot with 25413-1-AP (G6PD antibody) at dilution of 1:3000 incubated at room temperature for 1.5 hours.



Immunofluorescent analysis of (-20°C Ethanol) fixed HeLa cells using 25413-1-AP (G6PD antibody) at dilution of 1:50 and Alexa Fluor 488-conjugated AffiniPure Goat Anti-Rabbit IgG(H+L).