

For Research Use Only

# Cleaved Caspase 3 Polyclonal antibody

Catalog Number: 25128-1-AP

221 Publications



## Basic Information

### Catalog Number:

25128-1-AP

### Concentration:

700 ug/ml

### Source:

Rabbit

### Isotype:

IgG

### GenBank Accession Number:

NM\_032991

### GeneID (NCBI):

836

### UNIPROT ID:

P42574

### Full Name:

caspase 3, apoptosis-related cysteine peptidase

### Calculated MW:

32 kDa

### Observed MW:

17-25 kDa

### Purification Method:

Antigen affinity purification

### Recommended Dilutions:

WB: 1:500-1:2000

IHC: 1:50-1:500

IF/ICC: 1:50-1:500

## Applications

### Tested Applications:

WB, IHC, IF/ICC, ELISA

### Cited Applications:

WB, IHC, IF

### Species Specificity:

human, mouse

### Cited Species:

human, mouse, rat, chicken, bovine, goat

### Positive Controls:

WB: Jurkat cells,

IHC: mouse brain tissue,

IF/ICC: HeLa cells,

**Note-IHC: suggested antigen retrieval with TE buffer pH 9.0; (\*) Alternatively, antigen retrieval may be performed with citrate buffer pH 6.0**

## Background Information

Caspases, a family of endoproteases, are critical players in cell regulatory networks controlling inflammation and cell death. Initiator caspases (caspase-2, -8, -9, -10, -11, and -12) cleave and activate downstream effector caspases (caspase-3, -6, and -7), which in turn execute apoptosis by cleaving targeted cellular proteins. Caspase 3 plays a key role in the activation of sterol regulatory element binding proteins (SREBPs) between the basic helix-loop-helix leucine zipper domain and the membrane attachment domain. Caspase 3 can form heterocomplex with other proteins. This antibody can recognize the cleaved Caspase 3 fragments. This antibody is specific for cleaved caspase 3, and does not recognize full length caspase-3. The cleaved fragment of Caspase 3 might form complex and shows at around 30-35 kDa by western blot (PMID: 25501826).

## Notable Publications

Author	Pubmed ID	Journal	Application
Heting Zhou	40115251	Food Sci Nutr	WB
Chunpeng Yang	40118409	Int J Biol Macromol	WB
Meifeng Chen	40086489	Toxicol Appl Pharmacol	WB

## Storage

### Storage:

Store at -20°C. Stable for one year after shipment.

### Storage Buffer:

PBS with 0.02% sodium azide and 50% glycerol, pH7.3

Aliquoting is unnecessary for -20°C storage

For technical support and original validation data for this product please contact:

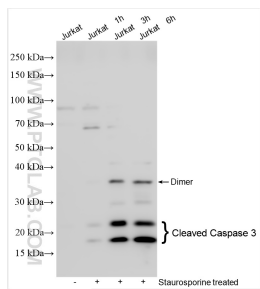
T: 4006900926

E: [Proteintech-CN@ptglab.com](mailto:Proteintech-CN@ptglab.com)

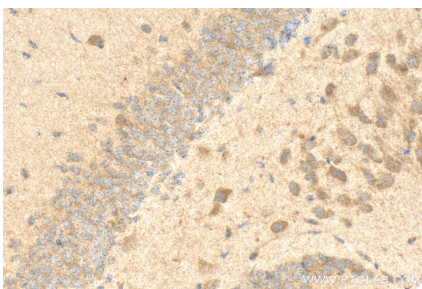
W: [ptgcn.com](http://ptgcn.com)

**This product is exclusively available under Proteintech Group brand and is not available to purchase from any other manufacturer.**

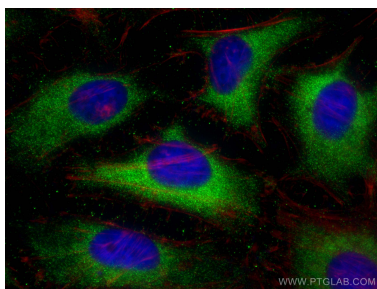
## Selected Validation Data



Various lysates were subjected to SDS PAGE followed by western blot with 25128-1-AP (cleaved Caspase 3 antibody) at dilution of 1:1000 incubated at room temperature for 1.5 hours.



Immunohistochemical analysis of paraffin-embedded mouse brain tissue slide using 25128-1-AP (Cleaved Caspase 3 antibody) at dilution of 1:200 (under 40x lens). Heat mediated antigen retrieval with Tris-EDTA buffer (pH 9.0).



Immunofluorescent analysis of (-20°C Ethanol) fixed HeLa cells using Cleaved Caspase 3 antibody (25128-1-AP) at dilution of 1:200 and CoraLite®488-Conjugated AffiniPure Goat Anti-Rabbit IgG(H+L) (SA00013-2), CL594-phalloidin (red).