

For Research Use Only

ILK Polyclonal antibody

Catalog Number: 24926-1-AP **1 Publications**



Basic Information

Catalog Number: 24926-1-AP	GenBank Accession Number: BC001554	Purification Method: Antigen affinity purification
Size: 500 µg/ml	GeneID (NCBI): 3611	Recommended Dilutions: WB 1:500-1:2000 IHC 1:50-1:500 IF 1:20-1:200
Source: Rabbit	UNIPROT ID: Q13418	
Isotype: IgG	Full Name: integrin-linked kinase	
Immunogen Catalog Number: AG21494	Calculated MW: 451 aa, 59 kDa	
	Observed MW: 51 kDa	

Applications

Tested Applications: IF/ICC, IHC, WB, ELISA	Positive Controls: WB : mouse heart tissue, MCF-7 cells IHC : human pancreas cancer tissue, IF : MCF-7 cells,
Cited Applications: IHC	
Species Specificity: human, mouse	
Cited Species: mouse	

Note-IHC: suggested antigen retrieval with TE buffer pH 9.0; (*) Alternatively, antigen retrieval may be performed with citrate buffer pH 6.0

Background Information

ILK(Integrin-linked protein kinase) is also named as p59, PAT-4, DKFZp686F1765, ILK-1, ILK-2, ILK1, ILK2, p59ILK and belongs to the TKL Ser/Thr protein kinase family. This protein localizes to multiple sites, including the cytoplasm, and imports into the nucleus through sequences in its N-terminus, via active transport mechanisms that involve nuclear pore complexes(PMID: 18635968). ILK performs crucial roles in the control of intestinal cell and crypt-villus axis homeostasis-especially with regard to basement membrane fibronectin deposition-as well as cell proliferation, spreading, and migration(PMID:19885839).

Notable Publications

Author	Pubmed ID	Journal	Application
Menghong Xu	35289594	ACS Appl Mater Interfaces	IHC

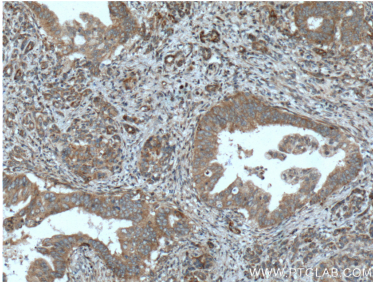
Storage

Storage:
Store at -20°C. Stable for one year after shipment.
Storage Buffer:
PBS with 0.02% sodium azide and 50% glycerol pH 7.3.
Aliquoting is unnecessary for -20°C storage

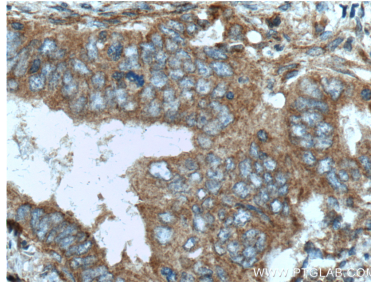
For technical support and original validation data for this product please contact:
T: 4006900926 E: Proteintech-CN@ptglab.com W: ptgcn.com

This product is exclusively available under Proteintech Group brand and is not available to purchase from any other manufacturer.

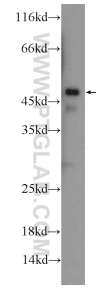
Selected Validation Data



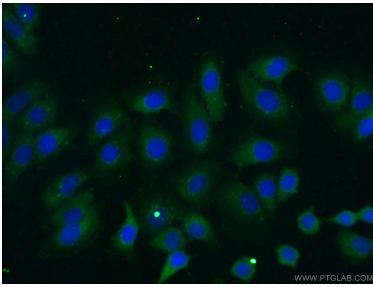
Immunohistochemical analysis of paraffin-embedded human pancreas cancer tissue slide using 24926-1-AP (ILK Antibody) at dilution of 1:200 (under 10x lens). Heat mediated antigen retrieval with Tris-EDTA buffer (pH 9.0).



Immunohistochemical analysis of paraffin-embedded human pancreas cancer tissue slide using 24926-1-AP (ILK Antibody) at dilution of 1:200 (under 40x lens). Heat mediated antigen retrieval with Tris-EDTA buffer (pH 9.0).



mouse heart tissue were subjected to SDS PAGE followed by western blot with 24926-1-AP (ILK Antibody) at dilution of 1:1000 incubated at room temperature for 1.5 hours.



Immunofluorescent analysis of (-20°C Ethanol) fixed MCF-7 cells using 24926-1-AP (ILK antibody) at dilution of 1:50 and Alexa Fluor 488-conjugated AffiniPure Goat Anti-Rabbit IgG(H+L).