

For Research Use Only

MME,CD10 Polyclonal antibody

Catalog Number: 23898-1-AP **2 Publications**



Basic Information

Catalog Number: 23898-1-AP	GenBank Accession Number: BC101658	Purification Method: Antigen affinity purification
Size: 800 µg/ml	GeneID (NCBI): 4311	Recommended Dilutions: WB 1:500-1:2000 IHC 1:50-1:500 IF 1:50-1:500
Source: Rabbit	UNIPROT ID: P08473	
Isotype: IgG	Full Name: membrane metallo-endopeptidase	
Immunogen Catalog Number: AG20963	Calculated MW: 750 aa, 86 kDa	
	Observed MW: 90-110 kDa	

Applications

Tested Applications:
FC, IF/ICC, IF-P, IHC, WB, ELISA

Cited Applications:
IF, WB

Species Specificity:
human, mouse, rat

Cited Species:
human, mouse

Note-IHC: suggested antigen retrieval with TE buffer pH 9.0; (*) Alternatively, antigen retrieval may be performed with citrate buffer pH 6.0

Positive Controls:

WB: mouse kidney tissue, human kidney tissue, rat kidney tissue

IHC: human kidney tissue,

IF: mouse kidney tissue, HepG2 cells

Background Information

MME is also names as neprilysin, CALLA, NEP, SFE, CD10 and belongs to the peptidase M13 family. It is a glycoprotein that is particularly abundant in kidney, where it is present on the brush border of proximal tubules and on glomerular epithelium. CD10 has been considered a useful marker in the diagnosis of renal carcinomas, because of its expression in clear cell and papillary renal cell carcinomas and its absence in chromophobe renal cell carcinomas (PMID:15286660).

Notable Publications

Author	Pubmed ID	Journal	Application
Caiyun Li	34644519	Biochem Cell Biol	WB
Xintiu Zeng	29669342	Cell Physiol Biochem	IF

Storage

Storage:

Store at -20°C. Stable for one year after shipment.

Storage Buffer:

PBS with 0.02% sodium azide and 50% glycerol pH 7.3.

Aliquoting is unnecessary for -20°C storage

For technical support and original validation data for this product please contact:

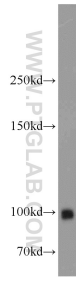
T: 4006900926

E: Proteintech-CN@ptglab.com

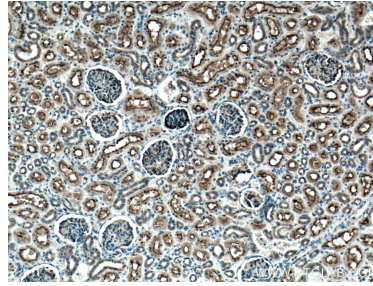
W: ptgcn.com

This product is exclusively available under Proteintech Group brand and is not available to purchase from any other manufacturer.

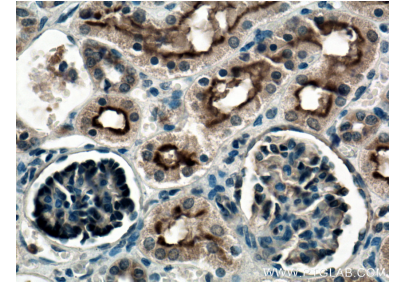
Selected Validation Data



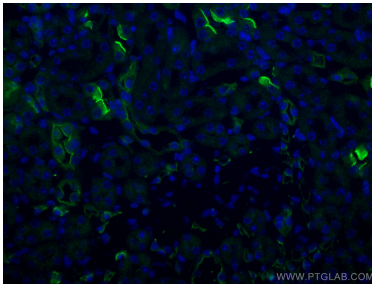
mouse kidney tissue were subjected to SDS PAGE followed by western blot with 23898-1-AP (MME,CD10 antibody) at dilution of 1:1000 incubated at room temperature for 1.5 hours.



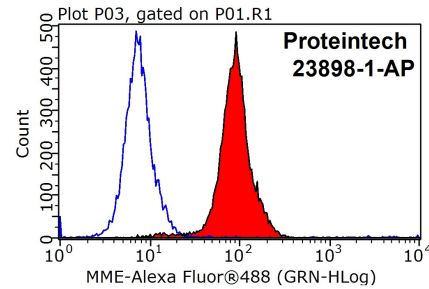
Immunohistochemical analysis of paraffin-embedded human kidney tissue slide using 23898-1-AP (MME,CD10 antibody) at dilution of 1:200 (under 10x lens. Heat mediated antigen retrieval with Tris-EDTA buffer (pH 9.0).



Immunohistochemical analysis of paraffin-embedded human kidney tissue slide using 23898-1-AP (MME,CD10 antibody) at dilution of 1:200 (under 40x lens. Heat mediated antigen retrieval with Tris-EDTA buffer (pH 9.0).



Immunofluorescent analysis of (4% PFA) fixed mouse kidney tissue using MME,CD10 antibody (23898-1-AP) at dilution of 1:200 and CoraLite@488-Conjugated AffiniPure Goat Anti-Rabbit IgG(H+L).



1x10⁶ HepG2 cells were stained with .2ug MME,CD10 antibody (23898-1-AP, red) and control antibody (blue). Fixed with 90% MeOH blocked with 3% BSA (30 min). Alexa Fluor 488-conjugated AffiniPure Goat Anti-Rabbit IgG(H+L) with dilution 1:1000.