

# ADM2 Polyclonal antibody

Catalog Number: 23781-1-AP

1 Publications

## Basic Information

Catalog Number:

23781-1-AP

Size:

1000 µg/ml

Source:

Rabbit

Isotype:

IgG

Immunogen Catalog Number:

AG20548

GenBank Accession Number:

BC012864

GeneID (NCBI):

79924

UNIPROT ID:

Q7Z4H4

Full Name:

adrenomedullin 2

Calculated MW:

16 kDa

Purification Method:

Antigen Affinity purified

Recommended Dilutions:

IHC 1:50-1:500

## Applications

Tested Applications:

IHC, ELISA

Cited Applications:

IF

Species Specificity:

human, mouse

Cited Species:

human

**Note-IHC: suggested antigen retrieval with TE buffer pH 9.0; (\*) Alternatively, antigen retrieval may be performed with citrate buffer pH 6.0**

Positive Controls:

IHC : human stomach tissue, mouse stomach tissue, mouse heart tissue

## Background Information

ADM2 also named as adrenomedullin 2 or IMD5 is a 148 amino-acid secreted protein, which belongs to adrenomedullin family of calcitonin-related peptide hormones and is expressed in the esophagus, stomach, jejunum, ileum, ileocecum, ascending colon, transverse colon, descending colon and rectum. ADM2 activates the cAMP-dependent pathway and may play a role in regulating gastrointestinal and cardiovascular bioactivities. ADM2 play a role in the regulation of peripheral tissues by calcitonin receptor-like receptor.

## Notable Publications

Author	Pubmed ID	Journal	Application
Lifang Ye	35720354	Front Immunol	IF

## Storage

Storage:

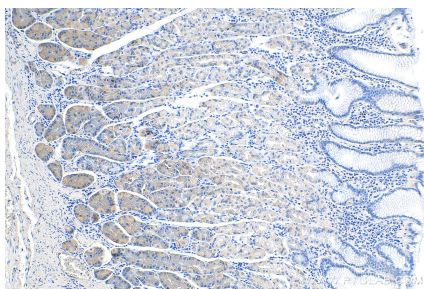
Store at -20°C. Stable for one year after shipment.

Storage Buffer:

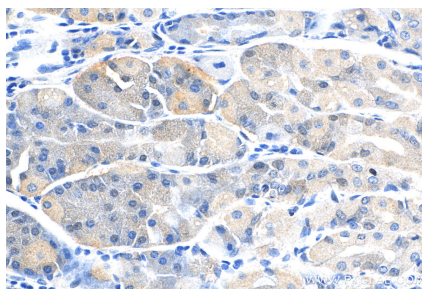
PBS with 0.02% sodium azide and 50% glycerol pH 7.3.

Aliquoting is unnecessary for -20°C storage

## Selected Validation Data



Immunohistochemical analysis of paraffin-embedded human stomach tissue slide using 23781-1-AP (ADM2 antibody) at dilution of 1:200 (under 10x lens).



Immunohistochemical analysis of paraffin-embedded human stomach tissue slide using 23781-1-AP (ADM2 antibody) at dilution of 1:200 (under 40x lens).