

For Research Use Only

EML4 Polyclonal antibody

Catalog Number: 22709-1-AP



Basic Information

Catalog Number:

22709-1-AP

Size:

700 µg/ml

Source:

Rabbit

Isotype:

IgG

Immunogen Catalog Number:

AG18463

GenBank Accession Number:

BC140845

GeneID (NCBI):

27436

UNIPROT ID:

Q9HC35

Full Name:

echinoderm microtubule associated protein like 4

Calculated MW:

981 aa, 109 kDa

Observed MW:

120 kDa

Purification Method:

Antigen Affinity purified

Recommended Dilutions:

WB 1:500-1:3000

IP 0.5-4.0 µg for 1.0-3.0 mg of total protein lysate

IHC 1:50-1:500

IF 1:20-1:200

Applications

Tested Applications:

IF/ICC, IHC, IP, WB, ELISA

Species Specificity:

human

Note-IHC: suggested antigen retrieval with TE buffer pH 9.0; (*) Alternatively, antigen retrieval may be performed with citrate buffer pH 6.0

Positive Controls:

WB: A549 cells, A431 cells, HeLa cells

IP: A549 cells,

IHC: human breast cancer tissue, human prostate cancer tissue, human lung cancer tissue

IF: A549 cells,

Background Information

Storage

Storage:

Store at -20°C. Stable for one year after shipment.

Storage Buffer:

PBS with 0.02% sodium azide and 50% glycerol pH 7.3.

Aliquoting is unnecessary for -20°C storage

For technical support and original validation data for this product please contact:

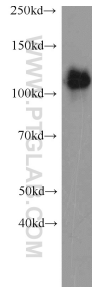
T: 4006900926

E: Proteintech-CN@ptglab.com

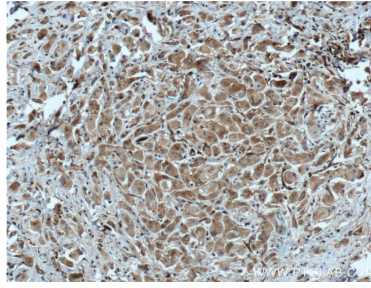
W: ptgcn.com

This product is exclusively available under Proteintech Group brand and is not available to purchase from any other manufacturer.

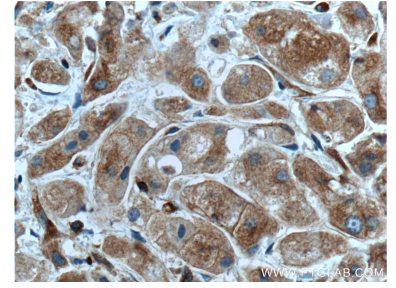
Selected Validation Data



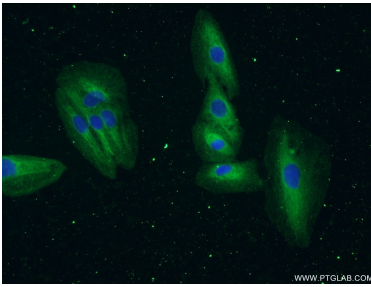
A549 cells were subjected to SDS PAGE followed by western blot with 22709-1-AP (EML4 antibody) at dilution of 1:2000 incubated at room temperature for 1.5 hours.



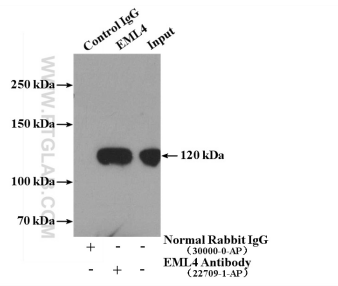
Immunohistochemical analysis of paraffin-embedded human breast cancer tissue slide using 22709-1-AP (EML4 Antibody) at dilution of 1:200 (under 10x lens). Heat mediated antigen retrieval with Tris-EDTA buffer (pH 9.0).



Immunohistochemical analysis of paraffin-embedded human breast cancer tissue slide using 22709-1-AP (EML4 Antibody) at dilution of 1:200 (under 40x lens). Heat mediated antigen retrieval with Tris-EDTA buffer (pH 9.0).



Immunofluorescent analysis of A549 cells using 22709-1-AP (EML4 antibody) at dilution of 1:50 and Alexa Fluor 488-conjugated AffiniPure Goat Anti-Rabbit IgG(H+L).



IP result of anti-EML4 (IP:22709-1-AP, 4ug; Detection:22709-1-AP 1:2000) with A549 cells lysate 400ug.