

ATOX1 Polyclonal antibody

Catalog Number: 22641-1-AP

1 Publications

Basic Information

Catalog Number:

22641-1-AP

Size:

550 µg/ml

Source:

Rabbit

Isotype:

IgG

Immunogen Catalog Number:

AG18460

GenBank Accession Number:

BC112248

GeneID (NCBI):

475

UNIPROT ID:

O00244

Full Name:

ATX1 antioxidant protein 1 homolog (yeast)

Calculated MW:

68 aa, 8 kDa

Observed MW:

7 kDa

Purification Method:

Antigen affinity purification

Recommended Dilutions:

WB 1:500-1:2000

IHC 1:50-1:500

IF 1:50-1:500

Applications

Tested Applications:

IF/ICC, IHC, WB, ELISA

Cited Applications:

WB

Species Specificity:

human

Cited Species:

mouse

Note-IHC: suggested antigen retrieval with TE buffer pH 9.0; (*) Alternatively, antigen retrieval may be performed with citrate buffer pH 6.0

Positive Controls:

WB : A375 cells, A549 cells, HEK-293T cells, NCI-H1299 cells, HEK-293 cells

IHC : human liver cancer tissue,

IF : PC-3 cells,

Background Information

Antioxidant 1 (ATOX1) is a copper chaperone to regulate copper homeostasis in cell. In the cytosol, ATOX1 always binds to copper and transfer to ATPase proteins in the trans-Golgi network, thereby promoting copper supply to various copper-dependent oxidoreductases matured within the secretory vesicles (PMID: 28294521). Also, the protein could protect cells against oxidative damage and the expression levels of ATOX1 may help to the inflammatory response and antioxidant defense, even to modulate response to the cancer (PMID: 27472369). ATOX1 plays an important role in the physiology of the human central nervous system, and it's highly expressed in the cerebral cortex and hippocampus (PMID: 30545441). Either cytosol or nucleus location of ATOX1 has been reported in different literatures, which may be associated with cell status (PMID: 24445997; 31317143).

Notable Publications

Author	Pubmed ID	Journal	Application
Jinsong Wei	37456842	iScience	WB

Storage

Storage:

Store at -20°C. Stable for one year after shipment.

Storage Buffer:

PBS with 0.02% sodium azide and 50% glycerol pH 7.3.

Aliquoting is unnecessary for -20°C storage

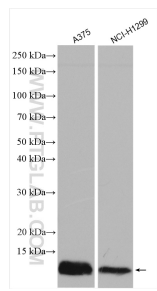
For technical support and original validation data for this product please contact:

T: 4006900926

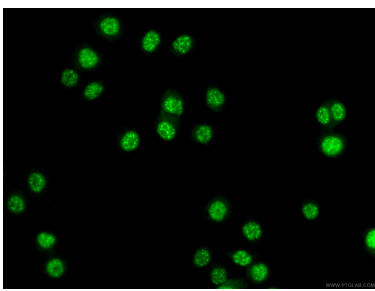
E: Proteintech-CN@ptglab.comW: ptgcn.com

This product is exclusively available under Proteintech Group brand and is not available to purchase from any other manufacturer.

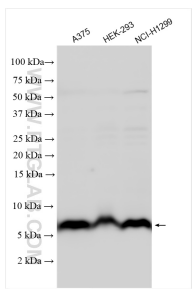
Selected Validation Data



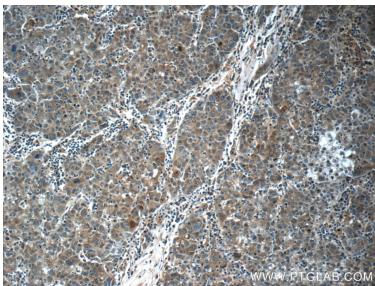
Various lysates were subjected to SDS PAGE followed by western blot with 22641-1-AP (ATOX1 antibody) at dilution of 1:1000 incubated at room temperature for 1.5 hours.



Immunofluorescent analysis of (4% PFA) fixed PC-3 cells using 22641-1-AP (ATOX1 antibody) at dilution of 1:100 and CoraLite488-Conjugated AffiniPure Goat Anti-Rabbit IgG(H+L).



Various lysates were subjected to SDS PAGE followed by western blot with 22641-1-AP (ATOX1 antibody) at dilution of 1:600 incubated at room temperature for 1.5 hours.



Immunohistochemical analysis of paraffin-embedded human liver cancer tissue slide using 22641-1-AP (ATOX1 Antibody) at dilution of 1:50 (under 10x lens).