

For Research Use Only

# BCR Polyclonal antibody

Catalog Number: 22585-1-AP

Featured Product

1 Publications



## Basic Information

**Catalog Number:**

22585-1-AP

**Size:**

700 µg/ml

**Source:**

Rabbit

**Isotype:**

IgG

**Immunogen Catalog Number:**

AG18281

**GenBank Accession Number:**

BC066122

**GeneID (NCBI):**

613

**UNIPROT ID:**

P11274

**Full Name:**

breakpoint cluster region

**Calculated MW:**

143 kDa

**Observed MW:**

150-160 kDa

**Purification Method:**

Antigen Affinity purified

**Recommended Dilutions:**

WB 1:500-1:2000

IP 0.5-4.0 µg for 1.0-3.0 mg of total protein lysate

IHC 1:20-1:200

IF 1:50-1:500

## Applications

**Tested Applications:**

FC, IF/ICC, IHC, IP, WB, ELISA

**Cited Applications:**

WB, IHC

**Species Specificity:**

human, monkey

**Cited Species:**

human, mouse

**Note-IHC: suggested antigen retrieval with TE buffer pH 9.0; (\*) Alternatively, antigen retrieval may be performed with citrate buffer pH 6.0**

**Positive Controls:**

**WB:** Y79 cells, COS-7 cells, HEK-293 cells, HeLa cells, K-562 cells, MCF-7 cells

**IP:** HEK-293 cells,

**IHC:** human skin tissue,

**IF:** HeLa cells, HepG2 cells

## Background Information

The Bcr gene, mapping on chromosome 22, was originally identified by its presence in the chimeric Bcr-Abl oncogene. The Bcr gene encodes for the break point cluster region protein (Bcr). Although the BCR-ABL fusion protein has been extensively studied, the function of the normal BCR gene product is not clear. The protein has serine/threonine kinase activity and is a GTPase-activating protein for RAC1 and CDC42. A chromosomal aberration involving BCR has been found in patients with chronic myeloid leukemia.

## Notable Publications

Author	Pubmed ID	Journal	Application
Yongtao Xiao	34190380	Neurogastroenterol Motil	WB,IHC

## Storage

**Storage:**

Store at -20°C. Stable for one year after shipment.

**Storage Buffer:**

PBS with 0.02% sodium azide and 50% glycerol pH 7.3.

Aliquoting is unnecessary for -20°C storage

For technical support and original validation data for this product please contact:

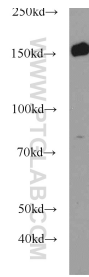
T: 4006900926

E: Proteintech-CN@ptglab.com

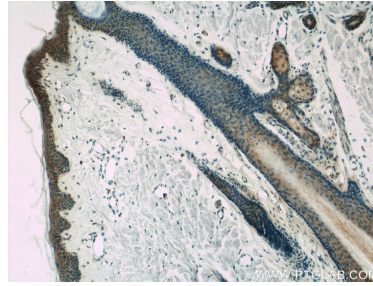
W: ptgcn.com

This product is exclusively available under Proteintech Group brand and is not available to purchase from any other manufacturer.

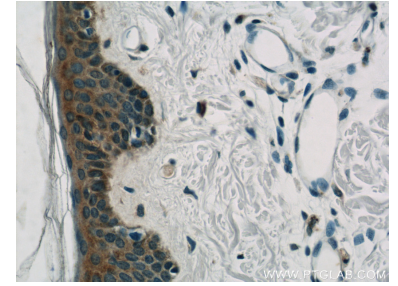
## Selected Validation Data



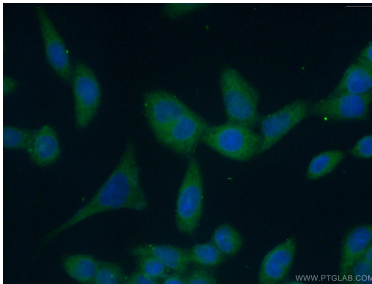
Y79 cells were subjected to SDS PAGE followed by western blot with 22585-1-AP (BCR antibody) at dilution of 1:1000 incubated at room temperature for 1.5 hours.



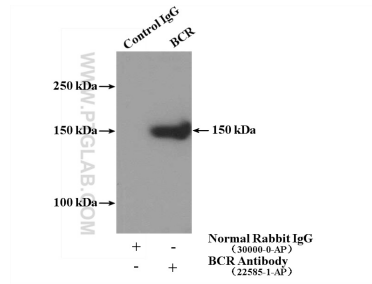
Immunohistochemical analysis of paraffin-embedded human skin slide using 22585-1-AP (BCR Antibody) at dilution of 1:50.



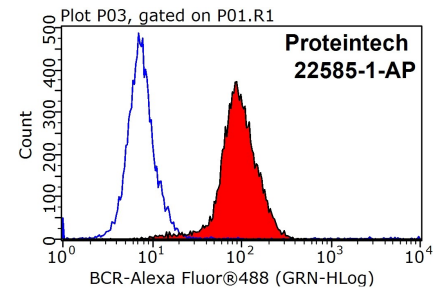
Immunohistochemical analysis of paraffin-embedded human skin slide using 22585-1-AP (BCR Antibody) at dilution of 1:50.



Immunofluorescent analysis of (-20°C Ethanol) fixed HeLa cells using 22585-1-AP (BCR antibody) at dilution of 1:50 and Alexa Fluor 488-conjugated AffiniPure Goat Anti-Rabbit IgG(H+L).



IP result of anti-BCR (IP:22585-1-AP, 4ug; Detection:22585-1-AP 1:1000) with HEK-293 cells lysate 3000ug.



1X10<sup>6</sup> HepG2 cells were stained with .2ug BCR antibody (22585-1-AP, red) and control antibody (blue). Fixed with 90% MeOH blocked with 3% BSA (30 min). Alexa Fluor 488-conjugated AffiniPure Goat Anti-Rabbit IgG(H+L) with dilution 1:1000.