

For Research Use Only

# ATP2A1 Polyclonal antibody

Catalog Number: 22361-1-AP **7 Publications**



## Basic Information

**Catalog Number:**

22361-1-AP

**Size:**

800 µg/ml

**Source:**

Rabbit

**Isotype:**

IgG

**Immunogen Catalog Number:**

AG17944

**GenBank Accession Number:**

BC037354

**GeneID (NCBI):**

487

**UNIPROT ID:**

O14983

**Full Name:**

ATPase, Ca<sup>++</sup> transporting, cardiac muscle, fast twitch 1

**Calculated MW:**

1001 aa, 110 kDa

**Observed MW:**

116 kDa

**Purification Method:**

Antigen Affinity purified

**Recommended Dilutions:**

WB 1:20000-1:100000

IP 0.5-4.0 µg for 1.0-3.0 mg of total protein lysate

IHC 1:50-1:500

## Applications

**Tested Applications:**

IHC, IP, WB, ELISA

**Cited Applications:**

WB

**Species Specificity:**

human, mouse, rat

**Cited Species:**

human, chicken, mouse, pig

**Note-IHC: suggested antigen retrieval with TE buffer pH 9.0; (\*) Alternatively, antigen retrieval may be performed with citrate buffer pH 6.0**

**Positive Controls:**

**WB:** mouse skeletal muscle tissue, rat skeletal muscle tissue

**IP:** mouse skeletal muscle tissue,

**IHC:** human skeletal muscle tissue, human heart tissue, mouse skeletal muscle tissue

## Background Information

### Notable Publications

Author	Pubmed ID	Journal	Application
Sijie Wang	36216077	Physiol Behav	WB
Jie Yang	30334551	Metallomics	WB
Nagakatsu Harada	32451822	J Muscle Res Cell Motil	WB

## Storage

**Storage:**

Store at -20°C. Stable for one year after shipment.

**Storage Buffer:**

PBS with 0.02% sodium azide and 50% glycerol pH 7.3.

Aliquoting is unnecessary for -20°C storage

For technical support and original validation data for this product please contact:

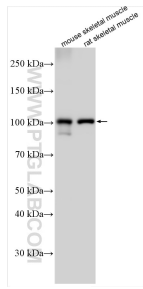
T: 4006900926

E: Proteintech-CN@ptglab.com

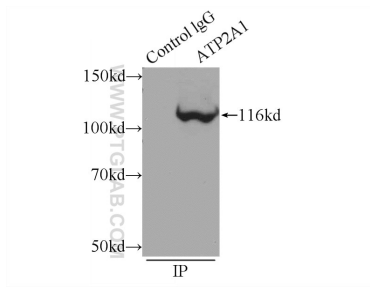
W: ptgcn.com

**This product is exclusively available under Proteintech Group brand and is not available to purchase from any other manufacturer.**

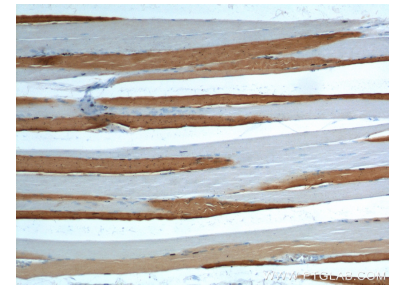
## Selected Validation Data



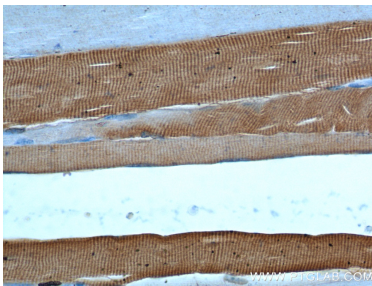
Various lysates were subjected to SDS PAGE followed by western blot with 22361-1-AP (ATP2A1 antibody) at dilution of 1:120000 incubated at room temperature for 1.5 hours.



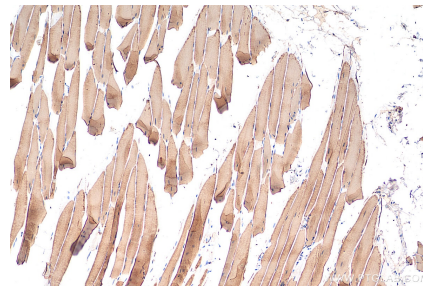
IP result of anti-ATP2A1 (IP:22361-1-AP, 5ug; Detection:22361-1-AP 1:700) with mouse skeletal muscle tissue lysate 2160ug.



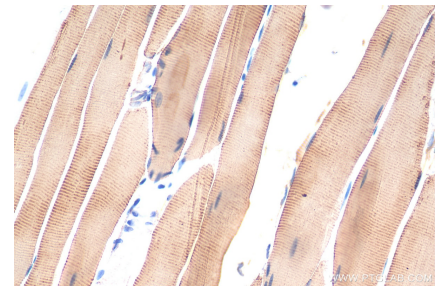
Immunohistochemical analysis of paraffin-embedded human skeletal muscle tissue slide using 22361-1-AP (ATP2A1 Antibody) at dilution of 1:200 (under 10x lens).



Immunohistochemical analysis of paraffin-embedded human skeletal muscle tissue slide using 22361-1-AP (ATP2A1 Antibody) at dilution of 1:200 (under 40x lens).



Immunohistochemical analysis of paraffin-embedded mouse skeletal muscle tissue slide using 22361-1-AP (ATP2A1 antibody) at dilution of 1:200 (under 10x lens). Heat mediated antigen retrieval with Tris-EDTA buffer (pH 9.0).



Immunohistochemical analysis of paraffin-embedded mouse skeletal muscle tissue slide using 22361-1-AP (ATP2A1 antibody) at dilution of 1:200 (under 40x lens). Heat mediated antigen retrieval with Tris-EDTA buffer (pH 9.0).