

# Cytokeratin 2e Polyclonal antibody

Catalog Number: 21725-1-AP

## Basic Information

**Catalog Number:**

21725-1-AP

**Size:**

380 µg/ml

**Source:**

Rabbit

**Isotype:**

IgG

**Immunogen Catalog Number:**

AG16384

**GenBank Accession Number:**

BC096294

**GeneID (NCBI):**

3849

**UNIPROT ID:**

P35908

**Full Name:**

keratin 2

**Calculated MW:**

639 aa, 66 kDa

**Observed MW:**

65 kDa

**Purification Method:**

Antigen affinity purification

**Recommended Dilutions:**

WB 1:5000-1:50000

IHC 1:500-1:2000

## Applications

**Tested Applications:**

IHC, WB, ELISA

**Species Specificity:**

human, mouse, rat

**Note-IHC: suggested antigen retrieval with TE buffer pH 9.0; (\*) Alternatively, antigen retrieval may be performed with citrate buffer pH 6.0**

**Positive Controls:**

WB : A431 cells, mouse skin tissue, rat skin tissue.

IHC : human cervical cancer tissue, human oesophagus cancer tissue

## Background Information

Keratins are a large family of proteins that form the intermediate filament cytoskeleton of epithelial cells. Keratin expression is highly regulated, tissue specific, and varies according to cell-state. Type I keratins consist of acidic, low molecular weight proteins with MW ranging from 40 kDa (KRT19) to 64 kDa (KRT9). Type 2 keratins consist of basic or neutral, high molecular weight proteins with MW from 52 kDa (KRT8) to 67 kDa (KRT18). Keratin 2 is a type II cytokeratin. It is found largely in the upper spinous layer of epidermal keratinocytes, and also in other regions, notably the epidermis covering the knee, thigh, and groin.

## Storage

**Storage:**

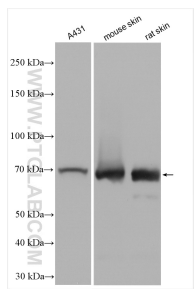
Store at -20°C. Stable for one year after shipment.

**Storage Buffer:**

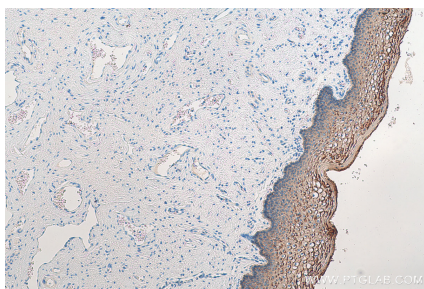
PBS with 0.02% sodium azide and 50% glycerol pH 7.3.

Aliquoting is unnecessary for -20°C storage

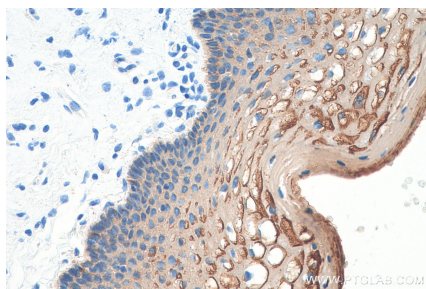
## Selected Validation Data



Various lysates were subjected to SDS PAGE followed by western blot with 21725-1-AP (KRT2 antibody) at dilution of 1:20000 incubated at room temperature for 1.5 hours.



Immunohistochemical analysis of paraffin-embedded human cervical cancer tissue slide using 21725-1-AP (KRT2 antibody) at dilution of 1:1000 (under 10x lens). Heat mediated antigen retrieval with Tris-EDTA buffer (pH 9.0).



Immunohistochemical analysis of paraffin-embedded human cervical cancer tissue slide using 21725-1-AP (KRT2 antibody) at dilution of 1:1000 (under 40x lens). Heat mediated antigen retrieval with Tris-EDTA buffer (pH 9.0).