

For Research Use Only

C1orf107 Polyclonal antibody

Catalog Number: 21076-1-AP



Basic Information

Catalog Number:

21076-1-AP

Size:

500 µg/ml

Source:

Rabbit

Isotype:

IgG

Immunogen Catalog Number:

AG15250

GenBank Accession Number:

BC022964

GeneID (NCBI):

27042

UNIPROT ID:

Q68CQ4

Full Name:

chromosome 1 open reading frame

107

Calculated MW:

756 aa, 87 kDa

Observed MW:

87-100 kDa

Purification Method:

Antigen affinity purification

Recommended Dilutions:

WB 1:200-1:1000

IP 0.5-4.0 µg for 1.0-3.0 mg of total protein lysate

Applications

Tested Applications:

IP, WB, ELISA

Species Specificity:

human

Positive Controls:

WB : HepG2 cells,

IP : HepG2 cells,

Background Information

Storage

Storage:

Store at -20°C. Stable for one year after shipment.

Storage Buffer:

PBS with 0.02% sodium azide and 50% glycerol pH 7.3.

Aliquoting is unnecessary for -20°C storage

For technical support and original validation data for this product please contact:

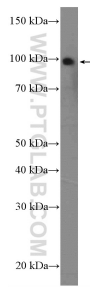
T: 4006900926

E: Proteintech-CN@ptglab.com

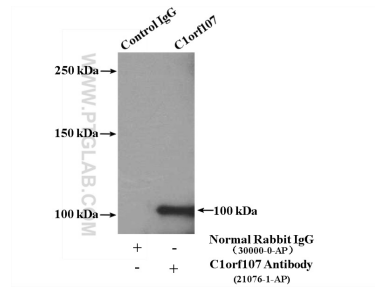
W: ptgcn.com

This product is exclusively available under Proteintech Group brand and is not available to purchase from any other manufacturer.

Selected Validation Data



HepG2 cells were subjected to SDS PAGE followed by western blot with 21076-1-AP (C1orf107 Antibody) at dilution of 1:300 incubated at room temperature for 1.5 hours.



IP result of anti-C1orf107 (IP:21076-1-AP, 4ug; Detection:21076-1-AP 1:300) with HepG2 cells lysate 1000ug.