

For Research Use Only

ABHD14B Polyclonal antibody

Catalog Number: 20952-1-AP



Basic Information

Catalog Number:

20952-1-AP

Size:

500 µg/ml

Source:

Rabbit

Isotype:

IgG

Immunogen Catalog Number:

AG15097

GenBank Accession Number:

BC007234

GeneID (NCBI):

84836

UNIPROT ID:

Q96IU4

Full Name:

abhydrolase domain containing 14B

Calculated MW:

210 aa, 22 kDa

Observed MW:

22-25 kDa

Purification Method:

Antigen affinity purification

Recommended Dilutions:

WB 1:500-1:2400

IHC 1:20-1:200

IF 1:10-1:100

Applications

Tested Applications:

IF/ICC, IHC, WB, ELISA

Species Specificity:

human, mouse, rat

Note-IHC: suggested antigen retrieval with TE buffer pH 9.0; (*) Alternatively, antigen retrieval may be performed with citrate buffer pH 6.0

Positive Controls:

WB : L02 cells, mouse small intestine tissue

IHC : human prostate hyperplasia tissue, human spleen tissue

IF : HepG2 cells,

Background Information

Storage

Storage:

Store at -20°C. Stable for one year after shipment.

Storage Buffer:

PBS with 0.02% sodium azide and 50% glycerol pH 7.3.

Aliquoting is unnecessary for -20°C storage

For technical support and original validation data for this product please contact:

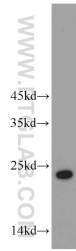
T: 4006900926

E: Proteintech-CN@ptglab.com

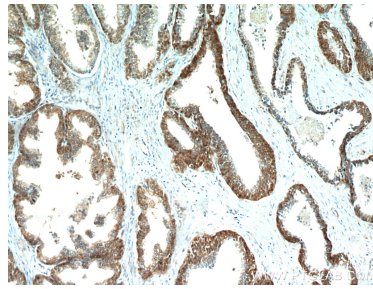
W: ptgcn.com

This product is exclusively available under Proteintech Group brand and is not available to purchase from any other manufacturer.

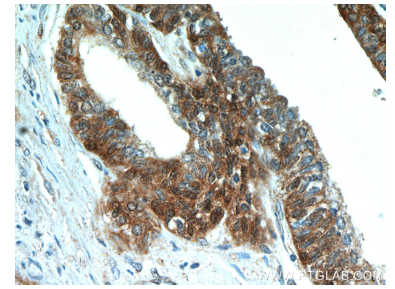
Selected Validation Data



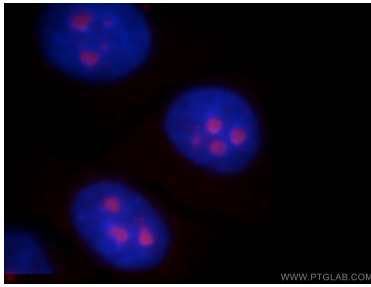
L02 cells were subjected to SDS PAGE followed by western blot with 20952-1-AP (ABHD14B antibody) at dilution of 1:400 incubated at room temperature for 1.5 hours.



Immunohistochemical analysis of paraffin-embedded human prostate hyperplasia using 20952-1-AP (ABHD14B antibody) at dilution of 1:50 (under 10x lens).



Immunohistochemical analysis of paraffin-embedded human prostate hyperplasia using 20952-1-AP (ABHD14B antibody) at dilution of 1:50 (under 40x lens).



Immunofluorescent analysis of HepG2 cells, using ABHD14B antibody 20952-1-AP at 1:25 dilution and Rhodamine-labeled goat anti-rabbit IgG (red). Blue pseudocolor = DAPI (fluorescent DNA dye).