

For Research Use Only

# CFTR Polyclonal antibody

Catalog Number: 20738-1-AP **5 Publications**



## Basic Information

**Catalog Number:**

20738-1-AP

**Size:**

650 µg/ml

**Source:**

Rabbit

**Isotype:**

IgG

**GenBank Accession Number:**

NM\_000492

**GeneID (NCBI):**

1080

**UNIPROT ID:**

P13569

**Full Name:**

cystic fibrosis transmembrane conductance regulator (ATP-binding cassette sub-family C, member 7)

**Calculated MW:**

168 kDa

**Purification Method:**

Antigen affinity purification

**Recommended Dilutions:**

IHC 1:500-1:2000

IF 1:50-1:500

## Applications

**Tested Applications:**

FC, IF/ICC, IHC, ELISA

**Cited Applications:**

IF, IHC, WB

**Species Specificity:**

human

**Cited Species:**

human, mouse

**Note-IHC: suggested antigen retrieval with TE buffer pH 9.0; (\*) Alternatively, antigen retrieval may be performed with citrate buffer pH 6.0**

**Positive Controls:**

IHC : human lung tissue, human breast cancer tissue

IF : HepG2 cells,

## Background Information

CFTR is a member of the ATP-binding cassette (ABC) family of membrane transport proteins, most members of which function as ATP-dependent pumps. CFTR is unique among human ABC proteins in functioning not as a pump, but as an ion channel.

## Notable Publications

Author	Pubmed ID	Journal	Application
Hui-Fang Zhang	36347997	Acta Pharmacol Sin	WB
Dao-Lai Zhang	29393851	Elife	WB,IF
Mauricio Di Fulvio	33264332	PLoS One	IF

## Storage

**Storage:**

Store at -20°C. Stable for one year after shipment.

**Storage Buffer:**

PBS with 0.02% sodium azide and 50% glycerol pH 7.3.

Aliquoting is unnecessary for -20°C storage

For technical support and original validation data for this product please contact:

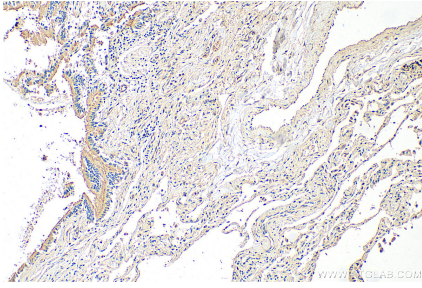
T: 4006900926

E: Proteintech-CN@ptglab.com

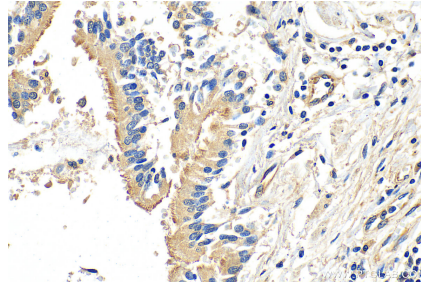
W: ptgcn.com

**This product is exclusively available under Proteintech Group brand and is not available to purchase from any other manufacturer.**

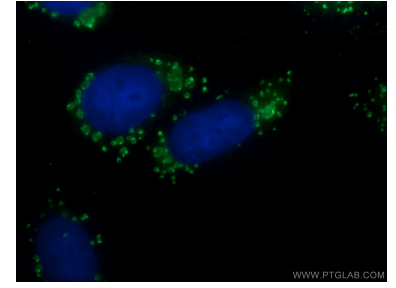
## Selected Validation Data



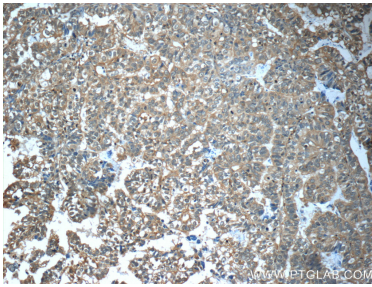
Immunohistochemical analysis of paraffin-embedded human lung tissue slide using 20738-1-AP (CFTR antibody) at dilution of 1:1000 (under 10x lens). Heat mediated antigen retrieval with Tris-EDTA buffer (pH 9.0).



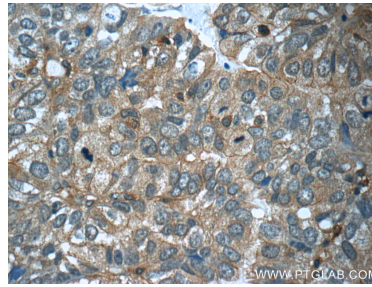
Immunohistochemical analysis of paraffin-embedded human lung tissue slide using 20738-1-AP (CFTR antibody) at dilution of 1:1000 (under 40x lens). Heat mediated antigen retrieval with Tris-EDTA buffer (pH 9.0).



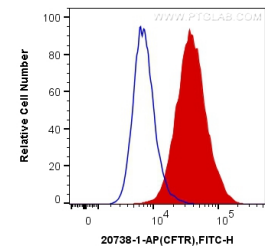
Immunofluorescent analysis of HepG2 cells using 20738-1-AP (CFTR antibody) at dilution of 1:50 and Alexa Fluor 488-conjugated AffiniPure Goat Anti-Rabbit IgG(H+L).



Immunohistochemical analysis of paraffin-embedded human breast cancer tissue slide using 20738-1-AP (CFTR Antibody) at dilution of 1:50 (under 10x lens).



Immunohistochemical analysis of paraffin-embedded human breast cancer tissue slide using 20738-1-AP (CFTR Antibody) at dilution of 1:50 (under 40x lens).



1X10<sup>6</sup> HUVEC cells were intracellularly stained with 0.2 ug Anti-Human CFTR (20738-1-AP) (red), or 0.2 ug Control Antibody. Cells were fixed with 4% PFA and permeabilized with Flow Cytometry Perm Buffer (PF00011-C).