

PTPIP51 Polyclonal antibody

Catalog Number: 20641-1-AP

Featured Product

10 Publications

Basic Information

Catalog Number:

20641-1-AP

Size:

500 µg/ml

Source:

Rabbit

Isotype:

IgG

Immunogen Catalog Number:

AG14708

GenBank Accession Number:

BC008970

GeneID (NCBI):

55177

UNIPROT ID:

Q96TC7

Full Name:

family with sequence similarity 82, member A2

Calculated MW:

470 aa, 52 kDa

Observed MW:

52-60 kDa

Purification Method:

Antigen affinity purification

Recommended Dilutions:

WB 1:500-1:3000

IP 0.5-4.0 µg for 1.0-3.0 mg of total protein lysate

IHC 1:20-1:200

IF 1:10-1:100

Applications

Tested Applications:

IF/ICC, IHC, IP, WB, ELISA

Cited Applications:

COIP, IF, IHC, WB

Species Specificity:

human

Cited Species:

human, rat, mouse, monkey

Note-IHC: suggested antigen retrieval with TE buffer pH 9.0; (*) Alternatively, antigen retrieval may be performed with citrate buffer pH 6.0

Positive Controls:

WB : HEK-293 cells, Jurkat cells

IP : HEK-293 cells,

IHC : human skin tissue, human cervical cancer tissue

IF : HepG2 cells,

Background Information

Notable Publications

Author	Pubmed ID	Journal	Application
Yan G Zhao	28890335	Mol Cell	COIP
Hana Antonicka	32877691	Cell Metab	WB
Sterling P Arjona	36419337	CNS Neurosci Ther	WB,IHC,IF

Storage

Storage:

Store at -20°C. Stable for one year after shipment.

Storage Buffer:

PBS with 0.02% sodium azide and 50% glycerol pH 7.3.

Aliquoting is unnecessary for -20°C storage

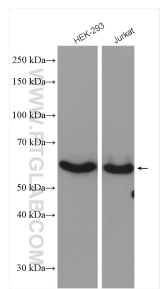
For technical support and original validation data for this product please contact:

T: 4006900926

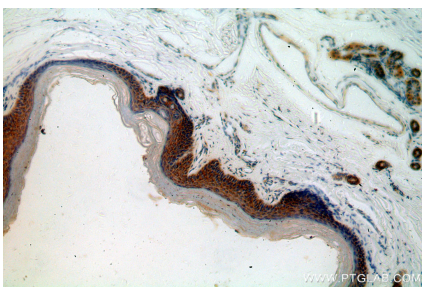
E: Proteintech-CN@ptglab.comW: ptgcn.com

This product is exclusively available under Proteintech Group brand and is not available to purchase from any other manufacturer.

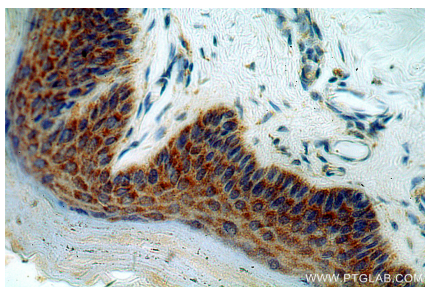
Selected Validation Data



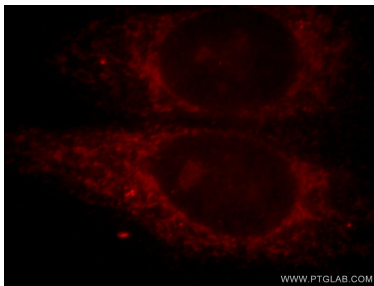
Various lysates were subjected to SDS PAGE followed by western blot with 20641-1-AP (PTPIP51 antibody) at dilution of 1:1500 incubated at room temperature for 1.5 hours.



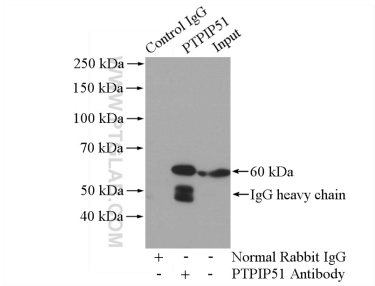
Immunohistochemical analysis of paraffin-embedded human skin using 20641-1-AP (PTPIP51 antibody) at dilution of 1:100 (under 10x lens).



Immunohistochemical analysis of paraffin-embedded human skin using 20641-1-AP (PTPIP51 antibody) at dilution of 1:100 (under 40x lens).



Immunofluorescent analysis of HepG2 cells, using FAM82A2 antibody 20641-1-AP at 1:25 dilution and Rhodamine-labeled goat anti-rabbit IgG (red).



IP result of anti-PTPIP51 (IP:20641-1-AP, 4ug; Detection:20641-1-AP 1:1000) with HEK-293 cells lysate 1100ug.