

For Research Use Only

# ARMC10 Polyclonal antibody

Catalog Number: 20506-1-AP

Featured Product

5 Publications



## Basic Information

### Catalog Number:

20506-1-AP

### Concentration:

350 ug/ml

### Source:

Rabbit

### Isotype:

IgG

### Immunogen Catalog Number:

AG14313

### GenBank Accession Number:

BC003586

### GeneID (NCBI):

83787

### UNIPROT ID:

Q8N2F6

### Full Name:

armadillo repeat containing 10

### Calculated MW:

343 aa, 38 kDa

### Observed MW:

31-37 kDa

### Purification Method:

Antigen affinity purification

### Recommended Dilutions:

WB 1:500-1:2000

IP 0.5-4.0 ug for 1.0-3.0 mg of total protein lysate

IHC 1:20-1:200

IF/ICC 1:50-1:500

## Applications

### Tested Applications:

WB, IHC, IF/ICC, IP, ELISA

### Cited Applications:

WB, IHC, IF, IP

### Species Specificity:

human, mouse, rat

### Cited Species:

human

**Note-IHC: suggested antigen retrieval with TE buffer pH 9.0; (\*) Alternatively, antigen retrieval may be performed with citrate buffer pH 6.0**

### Positive Controls:

**WB** : mouse heart tissue, HEK-293 cells, HepG2 cells, mouse brain tissue, mouse liver tissue, rat heart tissue

**IP** : A431 cells,

**IHC** : human placenta tissue,

**IF/ICC** : HepG2 cells, A431 cells

## Background Information

## Notable Publications

Author	Pubmed ID	Journal	Application
Bin Feng	39987562	Mol Carcinog	WB,IHC,IF
Guanxiang Zhuo	39773340	BMC Cancer	IHC
Yanyang Huang	38924214	J Cell Mol Med	WB,IF

## Storage

### Storage:

Store at -20°C. Stable for one year after shipment.

### Storage Buffer:

PBS with 0.02% sodium azide and 50% glycerol, pH7.3

Aliquoting is unnecessary for -20°C storage

For technical support and original validation data for this product please contact:

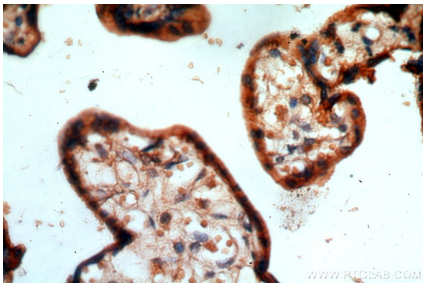
T: 4006900926

E: [Proteintech-CN@ptglab.com](mailto:Proteintech-CN@ptglab.com)

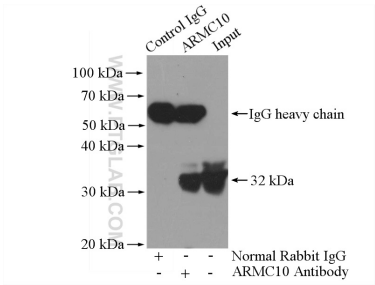
W: [ptgcn.com](http://ptgcn.com)

**This product is exclusively available under Proteintech Group brand and is not available to purchase from any other manufacturer.**

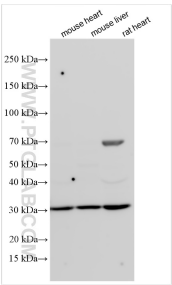
Selected Validation Data



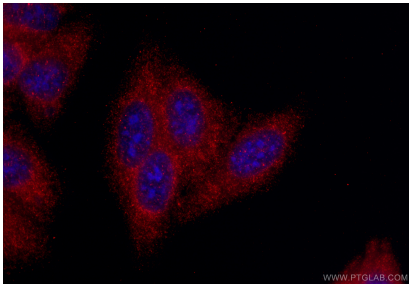
Immunohistochemical analysis of paraffin-embedded human placenta using 20506-1-AP (ARMC10 antibody) at dilution of 1:100 (under 40x lens).



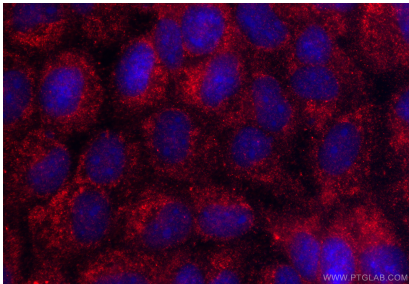
IP result of anti-ARMC10 (IP:20506-1-AP, 4ug; Detection:20506-1-AP 1:500) with A431 cells lysate 1600ug.



Various lysates were subjected to SDS PAGE followed by western blot with 20506-1-AP (ARMC10 antibody) at dilution of 1:1000 incubated at room temperature for 1.5 hours.



Immunofluorescent analysis of (-20°C Ethanol) fixed HepG2 cells using ARMC10 antibody (20506-1-AP) at dilution of 1:200 and CoraLite®594-Conjugated Goat Anti-Rabbit IgG(H+L) (SA00013-4).



Immunofluorescent analysis of (-20°C Methanol) fixed A431 cells using ARMC10 antibody (20506-1-AP) at dilution of 1:200 and CoraLite®594-Conjugated Goat Anti-Rabbit IgG(H+L) (SA00013-4).