

EGFR-Specific Polyclonal antibody

Catalog Number: 18986-1-AP

Featured Product

139 Publications

Basic Information

Catalog Number:

18986-1-AP

Size:

800 µg/ml

Source:

Rabbit

Isotype:

IgG

GenBank Accession Number:

NM_005228

GeneID (NCBI):

1956

UNIPROT ID:

P00533

Full Name:

epidermal growth factor receptor
(erythroblastic leukemia viral (v-erb-
b) oncogene homolog, avian)

Calculated MW:

134 kDa

Observed MW:

145-165 kDa

Purification Method:

Antigen affinity purification

Recommended Dilutions:

WB 1:1000-1:6000

IP 0.5-4.0 µg for 1.0-3.0 mg of total
protein lysate

IF 1:750-1:3000

Applications

Tested Applications:

FC, IF/ICC, IP, WB, ELISA

Cited Applications:

WB, IP, IHC, IF, FC, CoIP, ChIP

Species Specificity:

human

Cited Species:

human, rat, sheep, mouse, pig

Positive Controls:

WB : HepG2 cells, A431 cells, MCF-7 cells, multi-cells,
HeLa/RPE1 cells, HeLa cells, NCI-H1299 cells, A549
cells, L02 cells, NCL-H1299 cells

IP : MCF-7 cells,

IF : A431 cells,

Background Information

ERBB1, also named as EGFR, is a receptor for EGF, but also for other members of the EGF family, as TGF- α , amphiregulin, betacellulin, heparin-binding EGF-like growth factor, GP30 and vaccinia virus growth factor. ERBB1 is involved in the control of cell growth and differentiation. Phosphorylates MUC1 in breast cancer cells and increases the interaction of MUC1 with C-SRC and CTNNB1/beta-catenin. Isoform 2/truncated isoform of ERBB1 may act as an antagonist. EGFR is associated with lung cancer. The antibody is specific to isoform1.

Notable Publications

Author	Pubmed ID	Journal	Application
Haile Zhao	34658851	Front Pharmacol	WB, IP
Taiwei Wang	36169181	Oncol Rep	WB
Jing Cai	31826234	Carcinogenesis	WB, IHC, IF

Storage

Storage:

Store at -20°C. Stable for one year after shipment.

Storage Buffer:

PBS with 0.02% sodium azide and 50% glycerol pH 7.3.

Aliquoting is unnecessary for -20°C storage

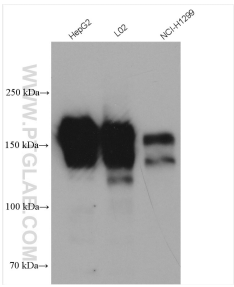
For technical support and original validation data for this product please contact:

T: 4006900926

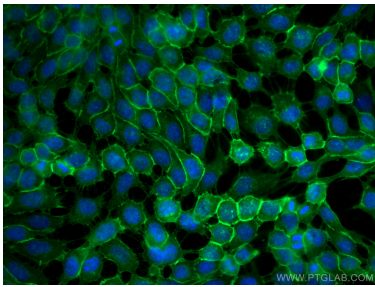
E: Proteintech-CN@ptglab.comW: ptgcn.com

This product is exclusively available under Proteintech Group brand and is not available to purchase from any other manufacturer.

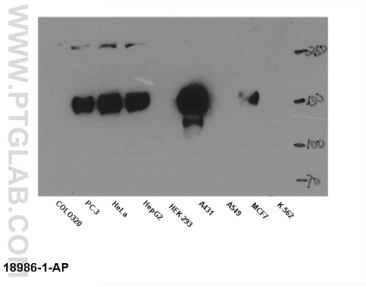
Selected Validation Data



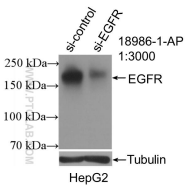
Various lysates were subjected to SDS PAGE followed by western blot with 18986-1-AP (EGFR-Specific antibody) at dilution of 1:3000 incubated at room temperature for 1.5 hours.



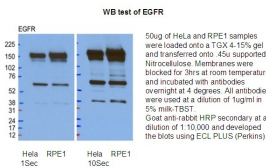
Immunofluorescent analysis of (-20°C Methanol) fixed A431 cells using EGFR-Specific antibody (18986-1-AP) at dilution of 1:1500 and CoraLite®488-Conjugated AffiniPure Goat Anti-Rabbit IgG(H+L).



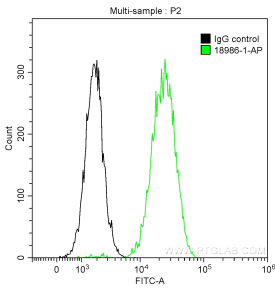
WB result of anti-EGFR (18986-1-AP) in different cell lysates.



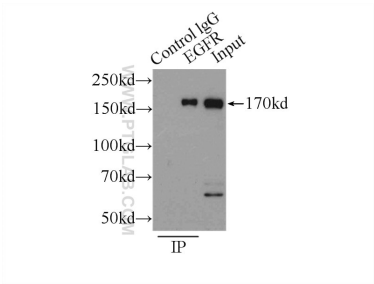
WB result of EGFR-Specific antibody (18986-1-AP; 1:3000; incubated at room temperature for 1.5 hours) with sh-Control and sh-EGFR-Specific transfected HepG2 cells.



WB result of anti-EGFR (18986-1-AP) in HeLa and RPE1 cell by Dr.Kodani, Andrew.



1X10⁶ A431 cells were stained with 0.2 ug Anti-Human EGFR-Specific (18986-1-AP) and CoraLite®488-Conjugated AffiniPure Goat Anti-Rabbit IgG(H+L) at dilution 1:1000 (green), and 0.2 ug Control Antibody. Cells were fixed with 90% MeOH.



IP result of anti-EGFR-Specific (IP:18986-1-AP, 3ug; Detection:18986-1-AP 1:500) with MCF-7 cells lysate 2500ug.