

Cytokeratin 18 Polyclonal antibody

Catalog Number: 18708-1-AP

4 Publications

Basic Information

Catalog Number:

18708-1-AP

Size:

350 µg/ml

Source:

Rabbit

Isotype:

IgG

GenBank Accession Number:

BC000180

GeneID (NCBI):

3875

UNIPROT ID:

P05783

Full Name:

keratin 18

Calculated MW:

48 kDa

Observed MW:

48 kDa

Purification Method:

Antigen affinity purification

Recommended Dilutions:

WB 1:500-1:2000

IP 0.5-4.0 µg for 1.0-3.0 mg of total protein lysate

IHC 1:200-1:800

IF 1:50-1:500

Applications

Tested Applications:

IF, IHC, IP, WB, ELISA

Cited Applications:

IF, IHC

Species Specificity:

human

Cited Species:

bovine, mouse, pig

Note-IHC: suggested antigen retrieval with TE buffer pH 9.0; (*) Alternatively, antigen retrieval may be performed with citrate buffer pH 6.0

Positive Controls:

WB : A431 cells, COLO 320 cells, HepG2 cells

IP : A431 cells,

IHC : human renal cell carcinoma tissue, human colon cancer tissue, human endometrial cancer tissue, human liver tissue, human skin cancer tissue, human breast cancer tissue, human neuroblastoma tissue, human ovary tumor tissue, human kidney tissue

IF : HepG2 cells,

Background Information

Keratins are a large family of proteins that form the intermediate filament cytoskeleton of epithelial cells, which are classified into two major sequence types. Type I keratins are a group of acidic intermediate filament proteins, including K9-K23, and the hair keratins Ha1-Ha8. Type II keratins are the basic or neutral counterparts to the acidic type I keratins, including K1-K8, and the hair keratins, Hb1-Hb6. KRT18, also named as CYK18, PIG46 and K18, is the most commonly found members of the intermediate filament gene family. KRT18 is a type I keratin which is found primarily in non squamous epithelia and is present in a majority of adenocarcinomas and ductal carcinomas but not in squamous cell carcinomas. This antibody is specifically against KRT18.

Notable Publications

Author	Pubmed ID	Journal	Application
Dhanushka Hewa Bostanthirige	33884281	Oncoscience	IHC
Jin-Song An	36497149	Cells	IHC
Ji Cheng	36040348	J Agric Food Chem	IF

Storage

Storage:

Store at -20°C. Stable for one year after shipment.

Storage Buffer:

PBS with 0.02% sodium azide and 50% glycerol pH 7.3.

Aliquoting is unnecessary for -20°C storage

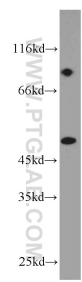
For technical support and original validation data for this product please contact:

T: 4006900926

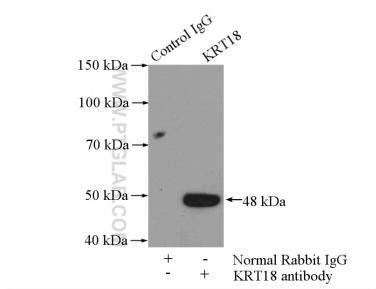
E: Proteintech-CN@ptglab.comW: ptgcn.com

This product is exclusively available under Proteintech Group brand and is not available to purchase from any other manufacturer.

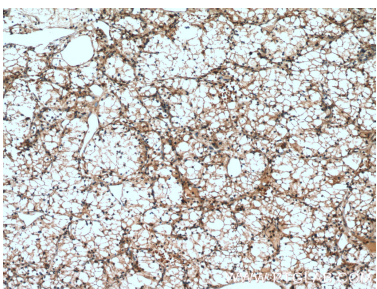
Selected Validation Data



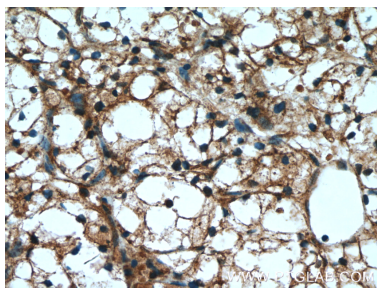
A431 cells were subjected to SDS PAGE followed by western blot with 18708-1-AP (Cytokeratin 18 antibody) at dilution of 1:1000 incubated at room temperature for 1.5 hours.



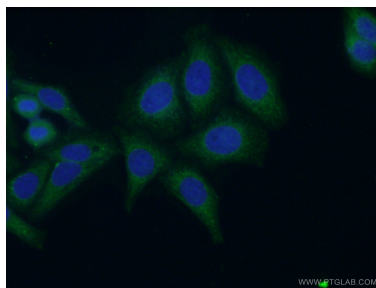
IP result of anti-Cytokeratin 18 (IP:18708-1-AP, 4ug; Detection:18708-1-AP 1:500) with A431 cells lysate 2000ug.



Immunohistochemical analysis of paraffin-embedded human renal cell carcinoma tissue slide using 18708-1-AP (Cytokeratin 18 antibody) at dilution of 1:400 (under 10x lens. Heat mediated antigen retrieval with Tris-EDTA buffer (pH 9.0).



Immunohistochemical analysis of paraffin-embedded human renal cell carcinoma tissue slide using 18708-1-AP (Cytokeratin 18 antibody) at dilution of 1:400 (under 40x lens. Heat mediated antigen retrieval with Tris-EDTA buffer (pH 9.0).



Immunofluorescent analysis of (-20°C Ethanol) fixed HepG2 cells using 18708-1-AP (Cytokeratin 18 antibody) at dilution of 1:50 and Alexa Fluor 488-conjugated AffiniPure Goat Anti-Rabbit IgG(H+L).