

For Research Use Only

# G-CSFR Polyclonal antibody

Catalog Number: 18310-1-AP **2 Publications**



## Basic Information

**Catalog Number:**

18310-1-AP

**Size:**

300 µg/ml

**Source:**

Rabbit

**Isotype:**

IgG

**GenBank Accession Number:**

BC053585

**GeneID (NCBI):**

1441

**UNIPROT ID:**

Q99062

**Full Name:**

colony stimulating factor 3 receptor (granulocyte)

**Calculated MW:**

95 kDa

**Observed MW:**

85 kDa

**Purification Method:**

Antigen affinity purification

**Recommended Dilutions:**

WB 1:500-1:2000

## Applications

**Tested Applications:**

FC, WB, ELISA

**Cited Applications:**

WB

**Species Specificity:**

human

**Cited Species:**

human, mouse

**Positive Controls:**

WB: human placenta tissue,

## Background Information

G-CSF-R, also named as CSF3R, CD114 and GCSFR is the receptor for colony stimulating factor 3, a cytokine that controls the production, differentiation, and function of granulocytes. It is a 130 kD to 150 kD glycoprotein single chain receptor which binds and activated by GCSF. In addition it may function in some adhesion or recognition events at the cell surface. It has been classified as a member of the hematopoietic (cytokine) receptor family, cytokine receptor class I, or the gp 130 related cytokine receptor family (although it does not apparently bind to gp 130). GCSF receptors can be found on neutrophils, myeloid leukemia cells that respond to GCSF, bone marrow cells of neutrophilic granulocyte lineage, and on placental trophoblasts. In addition, a soluble form is also expressed. Mutations in this gene are a cause of Kostmann syndrome, also known as severe congenital neutropenia.

## Notable Publications

Author	Pubmed ID	Journal	Application
Mary P Udumula	34144215	Mol Metab	WB
Yang Cheng	30779348	J Cell Physiol	WB

## Storage

**Storage:**

Store at -20°C. Stable for one year after shipment.

**Storage Buffer:**

PBS with 0.02% sodium azide and 50% glycerol pH 7.3.

Aliquoting is unnecessary for -20°C storage

For technical support and original validation data for this product please contact:

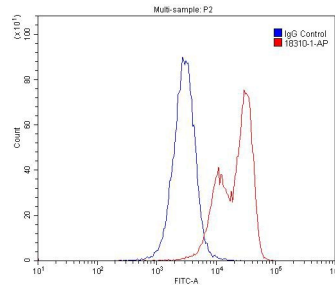
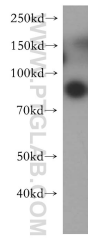
T: 4006900926

E: Proteintech-CN@ptglab.com

W: ptgcn.com

**This product is exclusively available under Proteintech Group brand and is not available to purchase from any other manufacturer.**

## Selected Validation Data



human placenta tissue were subjected to SDS PAGE followed by western blot with 18310-1-AP (G-CSFR antibody) at dilution of 1:300 incubated at room temperature for 1.5 hours.

$1 \times 10^6$  U-937 cells were stained with 0.2ug G-CSFR antibody (18310-1-AP, red) and control antibody (blue). Fixed with 4% PFA blocked with 3% BSA (30 min). Alexa Fluor 488-conjugated AffiniPure Goat Anti-Rabbit IgG(H+L) with dilution 1:1500.