

For Research Use Only

GRPEL2 Polyclonal antibody

Catalog Number: 17751-1-AP **2 Publications**



Basic Information

Catalog Number: 17751-1-AP	GenBank Accession Number: BC070090	Purification Method: Antigen affinity purification
Size: 300 µg/ml	GeneID (NCBI): 134266	Recommended Dilutions: WB 1:500-1:3000
Source: Rabbit	UNIPROT ID: Q8TAA5	
Isotype: IgG	Full Name: GrpE-like 2, mitochondrial (E. coli)	
Immunogen Catalog Number: AG12018	Calculated MW: 225 aa, 25 kDa	
	Observed MW: 25 kDa	

Applications

Tested Applications: WB, ELISA	Positive Controls: WB : mouse liver tissue,
Cited Applications: WB	
Species Specificity: human, mouse, rat	
Cited Species: human	

Background Information

Notable Publications

Author	Pubmed ID	Journal	Application
Ming-Chun Lai	34659882	Am J Cancer Res	WB
Jasmin Adriana Schafer	34847359	Mol Cell	WB

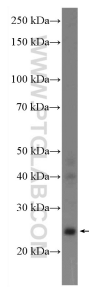
Storage

Storage:
Store at -20°C. Stable for one year after shipment.
Storage Buffer:
PBS with 0.02% sodium azide and 50% glycerol pH 7.3.
Aliquoting is unnecessary for -20°C storage

For technical support and original validation data for this product please contact:
T: 4006900926 E: Proteintech-CN@ptglab.com W: ptgcn.com

This product is exclusively available under Proteintech Group brand and is not available to purchase from any other manufacturer.

Selected Validation Data



Mitochondrial proteins from mouse liver tissue were subjected to SDS PAGE followed by western blot with 17751-1-AP (GRPEL2 Antibody) at dilution of 1:1500 incubated at room temperature for 1.5 hours.