

For Research Use Only

SMARCC1 Polyclonal antibody

Catalog Number: 17722-1-AP **3 Publications**



Basic Information

Catalog Number:

17722-1-AP

Size:

600 µg/ml

Source:

Rabbit

Isotype:

IgG

Immunogen Catalog Number:

AG12109

GenBank Accession Number:

BC050564

GeneID (NCBI):

6599

UNIPROT ID:

Q92922

Full Name:

SWI/SNF related, matrix associated, actin dependent regulator of chromatin, subfamily c, member 1

Calculated MW:

1105 aa, 123 kDa

Observed MW:

155-160 kDa

Purification Method:

Antigen affinity purification

Recommended Dilutions:

WB 1:2000-1:16000

IP 0.5-4.0 µg for 1.0-3.0 mg of total protein lysate

IHC 1:20-1:200

Applications

Tested Applications:

IHC, IP, WB, ELISA

Cited Applications:

WB, IP, CoIP

Species Specificity:

human, mouse, rat

Cited Species:

human, mouse

Positive Controls:

WB: K-562 cells, Jurkat cells, rat brain tissue, rat testis tissue

IP: mouse brain tissue,

IHC: human kidney tissue, human brain tissue, human ovary tissue, human placenta tissue, human testis tissue

Note-IHC: suggested antigen retrieval with TE buffer pH 9.0; (*) Alternatively, antigen retrieval may be performed with citrate buffer pH 6.0

Background Information

SMARCC1, also named as SWI/SNF complex 155 kDa subunit or BAF155, is a 1105 amino acid protein, which belongs to the SMARCC family. SMARCC1 is expressed in brain, heart, muscle, placenta, lung, liver, muscle, kidney and pancreas. SMARCC1 is involved in transcriptional activation and repression of select genes by chromatin remodeling. SMARCC1 may stimulate the ATPase activity of the catalytic subunit of the complex. SMARCC1 belongs to the neural progenitors-specific chromatin remodeling complex (npBAF complex) and the neuron-specific chromatin remodeling complex (nBAF complex). The calculated molecular weight of TCEA1 is 123 kDa, but modified SMARCC1 is about 155-160 kDa. (PMID: 24025402)

Notable Publications

Author	Pubmed ID	Journal	Application
Xu Zhu	32459350	Nucleic Acids Res	CoIP
David McClellan	30988160	Mol Cell Biol	
Jinxu Li	34078620	Cancer Discov	WB,IP

Storage

Storage:

Store at -20°C. Stable for one year after shipment.

Storage Buffer:

PBS with 0.02% sodium azide and 50% glycerol pH 7.3.

Aliquoting is unnecessary for -20°C storage

For technical support and original validation data for this product please contact:

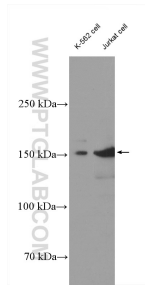
T: 4006900926

E: Proteintech-CN@ptglab.com

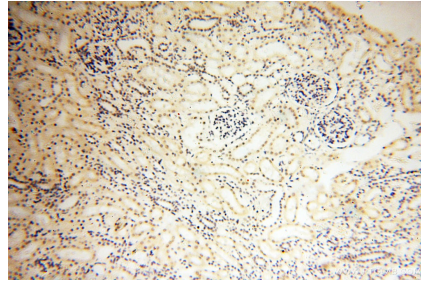
W: ptgcn.com

This product is exclusively available under Proteintech Group brand and is not available to purchase from any other manufacturer.

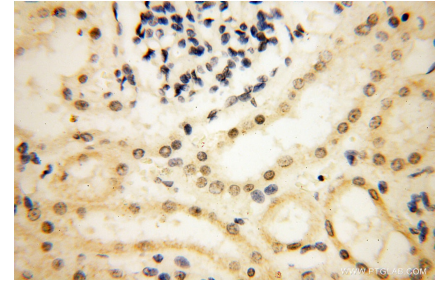
Selected Validation Data



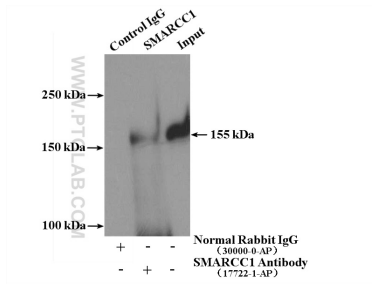
Various lysates were subjected to SDS PAGE followed by western blot with 17722-1-AP (SMARCC1 antibody) at dilution of 1:8000 incubated at room temperature for 1.5 hours.



Immunohistochemical analysis of paraffin-embedded human kidney using 17722-1-AP (SMARCC1 antibody) at dilution of 1:100 (under 10x lens).



Immunohistochemical analysis of paraffin-embedded human kidney using 17722-1-AP (SMARCC1 antibody) at dilution of 1:100 (under 40x lens).



IP result of anti-SMARCC1 (IP:17722-1-AP, 4ug; Detection:17722-1-AP 1:600) with mouse brain tissue lysate 4000ug.