

For Research Use Only

Beta Catenin Polyclonal antibody

Catalog Number: 17565-1-AP

Featured Product

107 Publications



Basic Information

Catalog Number:

17565-1-AP

Size:

600 µg/ml

Source:

Rabbit

Isotype:

IgG

Immunogen Catalog Number:

AG11763

GenBank Accession Number:

BC058926

GeneID (NCBI):

1499

ENSEMBL Gene ID:

ENSG00000168036

UNIPROT ID:

P35222

Full Name:

catenin (cadherin-associated protein),
beta 1, 88kDa

Calculated MW:

781 aa, 86 kDa

Observed MW:

92 kDa

Purification Method:

Antigen affinity purification

Recommended Dilutions:

WB 1:2000-1:16000

IP 0.5-4.0 µg for 1.0-3.0 mg of total
protein lysate

IHC 1:50-1:500

IF 1:200-1:800

Applications

Tested Applications:

FC, IF/ICC, IHC, IP, WB, ELISA

Cited Applications:

WB, IP, IF, IHC, CoIP

Species Specificity:

human, mouse, rat

Cited Species:

human, rat, mouse

**Note-IHC: suggested antigen retrieval with
TE buffer pH 9.0; (*) Alternatively, antigen
retrieval may be performed with citrate
buffer pH 6.0**

Positive Controls:

WB: HEK-293 cells, NIH/3T3 cells, HeLa cells, mouse
brain tissue, A431 cells, MCF-7 cells, mouse liver
tissue, rat brain tissue, C6 cells, rat liver tissue

IP: HEK-293 cells,

IHC: human liver cancer tissue, human breast cancer
tissue

IF: MCF-7 cells, T-47D cells, U-251 cells

Background Information

β-Catenin, also known as CTNNB1, is an evolutionarily conserved, multifunctional intracellular protein. β-Catenin was originally identified in cell adherens junctions (AJs) where it functions to bridge the cytoplasmic domain of cadherins to α-catenin and the actin cytoskeleton. Besides its essential role in the AJs, β-catenin is also a key downstream component of the canonical Wnt pathway that plays diverse and critical roles in embryonic development and adult tissue homeostasis. The Wnt/β-catenin pathway is also involved in the activation of other intracellular messengers such as calcium fluxes, JNK, and SRC kinases. Deregulation of β-catenin activity is associated with multiple diseases including cancers. (PMID: 22617422; 18334222)

Notable Publications

| Author | Pubmed ID | Journal | Application |
|--------------|-----------|--------------------|-------------|
| Hai-Yan Wang | 34588618 | Acta Pharmacol Sin | WB |
| Jiao Wu | 34517345 | Aging (Albany NY) | WB |
| Tianfu Li | 36089118 | Cancer Lett | WB |

Storage

Storage:

Store at -20°C. Stable for one year after shipment.

Storage Buffer:

PBS with 0.02% sodium azide and 50% glycerol pH 7.3.

Aliquoting is unnecessary for -20°C storage

For technical support and original validation data for this product please contact:

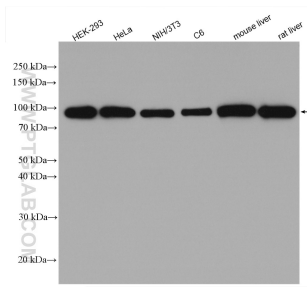
T: 4006900926

E: Proteintech-CN@ptglab.com

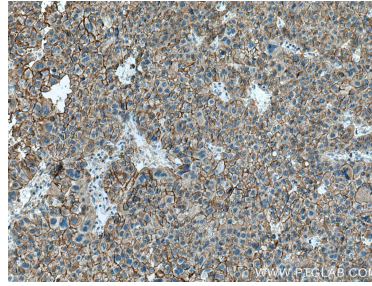
W: ptgcn.com

This product is exclusively available under Proteintech Group brand and is not available to purchase from any other manufacturer.

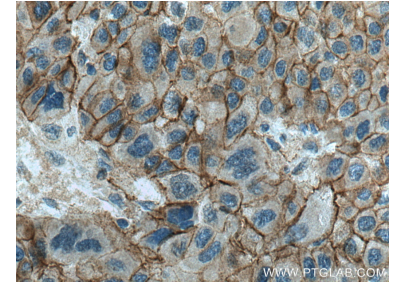
Selected Validation Data



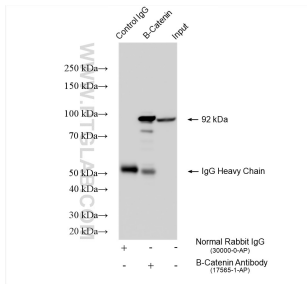
Various lysates were subjected to SDS PAGE followed by western blot with 17565-1-AP (Beta Catenin antibody) at dilution of 1:8000 incubated at room temperature for 1.5 hours.



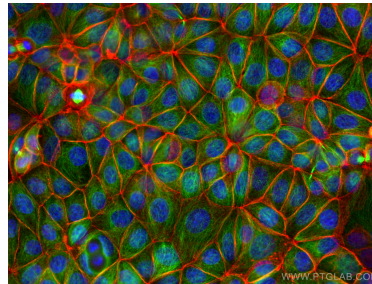
Immunohistochemical analysis of paraffin-embedded human liver cancer tissue slide using 17565-1-AP (beta-Catenin antibody) at dilution of 1:200 (under 10x lens). Heat mediated antigen retrieval with Tris-EDTA buffer (pH 9.0).



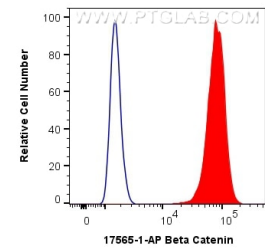
Immunohistochemical analysis of paraffin-embedded human liver cancer tissue slide using 17565-1-AP (beta-Catenin antibody) at dilution of 1:200 (under 40x lens). Heat mediated antigen retrieval with Tris-EDTA buffer (pH 9.0).



IP result of anti-Beta Catenin (IP:17565-1-AP, 4ug; Detection:17565-1-AP 1:5000) with HEK-293 cells lysate 1920 ug.



Immunofluorescent analysis of (4% PFA) fixed MCF-7 cells using Beta Catenin antibody (17565-1-AP) at dilution of 1:400 and CoraLite®594-Conjugated AffiniPure Goat Anti-Rabbit IgG(H+L), Alpha Tubulin antibody (66031-1-Ig, Clone: 1E4C11, green).



1×10^6 MCF-7 cells were intracellularly stained with 0.4 ug Anti-Human Beta Catenin (17565-1-AP) and CoraLite®488-Conjugated AffiniPure Goat Anti-Rabbit IgG(H+L) at dilution 1:1000 (red), or 0.4 ug Isotype Control. Cells were fixed with 4% PFA and permeabilized with Flow Cytometry Perm Buffer (PF00011-C).