

Cytokeratin 8 Polyclonal antibody

Catalog Number: 17514-1-AP

16 Publications

Basic Information

Catalog Number:

17514-1-AP

Size:

500 µg/ml

Source:

Rabbit

Isotype:

IgG

GenBank Accession Number:

NM_002273

GeneID (NCBI):

3856

UNIPROT ID:

P05787

Full Name:

keratin 8

Calculated MW:

54 kDa

Observed MW:

54 kDa

Purification Method:

Antigen affinity purification

Recommended Dilutions:

WB 1:1000-1:8000

IHC 1:50-1:500

Applications

Tested Applications:

FC, IHC, WB, ELISA

Cited Applications:

IF, IHC, WB

Species Specificity:

human, rat, mouse

Cited Species:

human, mouse, hamster

Note-IHC: suggested antigen retrieval with TE buffer pH 9.0; (*) Alternatively, antigen retrieval may be performed with citrate buffer pH 6.0

Positive Controls:

WB: A431 cells, A549 cells, C6 cells, HeLa cells, MCF-7 cells

IHC: human breast cancer tissue, human prostate cancer tissue, human colon tissue, human stomach tissue

Background Information

Keratins are a large family of proteins that form the intermediate filament cytoskeleton of epithelial cells, which are classified into two major sequence types. Type I keratins are a group of acidic intermediate filament proteins, including K9-K23, and the hair keratins Ha1-Ha8. Type II keratins are the basic or neutral counterparts to the acidic type I keratins, including K1-K8, and the hair keratins, Hb1-Hb6. KRT8 is often paired with keratin 18 in vivo. This antibody is specifically against KRT8.

Notable Publications

Author	Pubmed ID	Journal	Application
Jiajun Xie	34482361	Signal Transduct Target Ther	WB, IHC
Mengjie Li	34845376	Oncogene	WB
Xiaoqiu Zhou	30655849	Oncol Lett	IHC

Storage

Storage:

Store at -20°C. Stable for one year after shipment.

Storage Buffer:

PBS with 0.02% sodium azide and 50% glycerol pH 7.3.

Aliquoting is unnecessary for -20°C storage

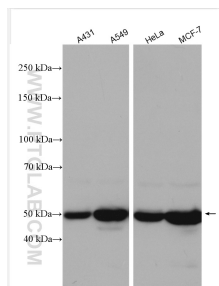
For technical support and original validation data for this product please contact:

T: 4006900926

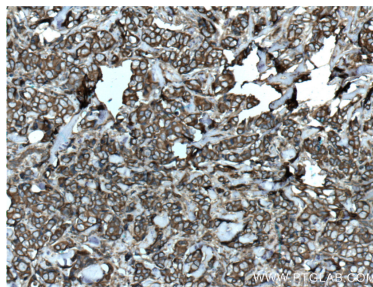
E: Proteintech-CN@ptglab.comW: ptgcn.com

This product is exclusively available under Proteintech Group brand and is not available to purchase from any other manufacturer.

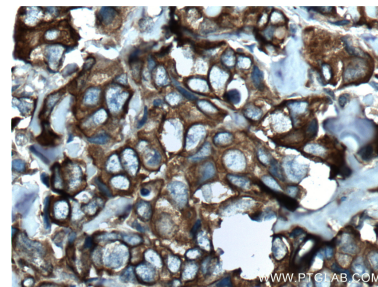
Selected Validation Data



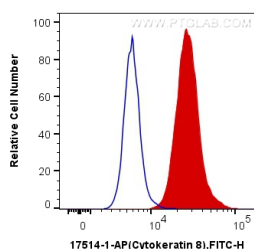
Various lysates were subjected to SDS PAGE followed by western blot with 17514-1-AP (Cytokeratin 8 antibody) at dilution of 1:8000 incubated at room temperature for 1.5 hours.



Immunohistochemical analysis of paraffin-embedded human breast cancer tissue slide using 17514-1-AP (Cytokeratin 8 antibody at dilution of 1:200 (under 10x lens). Heat mediated antigen retrieval with Tris-EDTA buffer (pH 9.0).



Immunohistochemical analysis of paraffin-embedded human breast cancer tissue slide using 17514-1-AP (Cytokeratin 8 antibody at dilution of 1:200 (under 40x lens). Heat mediated antigen retrieval with Tris-EDTA buffer (pH 9.0).



1X10⁶ HeLa cells were intracellularly stained with 0.2 ug Anti-Human Cytokeratin 8 (17514-1-AP) and CoraLite®488-Conjugated AffiniPure Goat Anti-Rabbit IgG(H+L) at dilution 1:1000 (red), or 0.2 ug Control Antibody. Cells were fixed with 4% PFA and permeabilized with Flow Cytometry Perm Buffer (PF00011-C).