

CXCL12/SDF-1 Polyclonal antibody

Catalog Number: 17402-1-AP

Featured Product

47 Publications

Basic Information

Catalog Number:

17402-1-AP

Size:

200 µg/ml

Source:

Rabbit

Isotype:

IgG

Immunogen Catalog Number:

AG11379

GenBank Accession Number:

BC039893

GeneID (NCBI):

6387

UNIPROT ID:

P48061

Full Name:

chemokine (C-X-C motif) ligand 12
(stromal cell-derived factor 1)

Calculated MW:

89 aa, 10 kDa

Purification Method:

Antigen affinity purification

Recommended Dilutions:

IHC 1:50-1:500

Applications

Tested Applications:

FC, IHC, ELISA

Cited Applications:

WB, IF, IHC

Species Specificity:

human, mouse

Cited Species:

human, rat, mouse

Positive Controls:

IHC : human liver cancer tissue,

Note-IHC: suggested antigen retrieval with TE buffer pH 9.0; (*) Alternatively, antigen retrieval may be performed with citrate buffer pH 6.0

Background Information

In adulthood, CXCL12 plays an important role in angiogenesis by recruiting endothelial progenitor cells (EPCs) from the bone marrow through a CXCR4 dependent mechanism (PMID: 17878755). It is this function of CXCL12 that makes it a very important factor in carcinogenesis and the neovascularisation linked to tumour progression (PMID: 16943240). CXCL12 also has a role in tumor metastasis where cancer cells that express the receptor CXCR4 are attracted to metastasis target tissues that release the ligand, CXCL12 (PMID: 11242036). In breast cancer, however, increased expression of CXCL12 determines a reduced risk of distant metastasis (PMID: 19646861; 17724466). This antibody can detect all the isoforms of CXCL12/SDF1.

Notable Publications

Author	Pubmed ID	Journal	Application
Bernardo Tavora	32999457	Nature	IF
Jianping Wang	28943249	Neuroscience	IF
Taotao Sun	36113503	Andrology	WB,IF

Storage

Storage:

Store at -20°C. Stable for one year after shipment.

Storage Buffer:

PBS with 0.02% sodium azide and 50% glycerol pH 7.3.

Aliquoting is unnecessary for -20°C storage

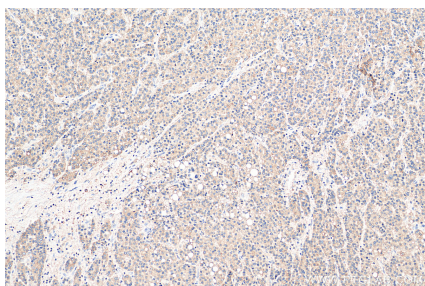
For technical support and original validation data for this product please contact:

T: 4006900926

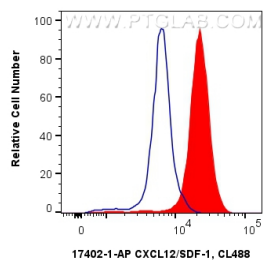
E: Proteintech-CN@ptglab.comW: ptgcn.com

This product is exclusively available under Proteintech Group brand and is not available to purchase from any other manufacturer.

Selected Validation Data



Immunohistochemical analysis of paraffin-embedded human liver cancer tissue slide using 17402-1-AP (CXCL12/SDF-1 antibody) at dilution of 1:200 (under 10x lens). Heat mediated antigen retrieval with Tris-EDTA buffer (pH 9.0).



1X10⁶ Jurkat cells were intracellularly stained with 0.4 ug Anti-Human CXCL12/SDF-1 (17402-1-AP) and CoraLite® 488-Conjugated AffiniPure Goat Anti-Rabbit IgG(H+L) at dilution 1:1000 (red), or 0.4 ug Rabbit IgG control Rabbit PolyAb (30000-0-AP, Clone:) (blue). Cells were fixed with 4% PFA and permeabilized with Flow Cytometry Perm Buffer (PF00011-C).