

For Research Use Only

ADH1B Polyclonal antibody

Catalog Number: 17165-1-AP **7 Publications**



Basic Information

Catalog Number:

17165-1-AP

Size:

750 µg/ml

Source:

Rabbit

Isotype:

IgG

Immunogen Catalog Number:

AG10630

GenBank Accession Number:

BC033009

GeneID (NCBI):

125

UNIPROT ID:

P00325

Full Name:

alcohol dehydrogenase 1B (class I),
beta polypeptide

Calculated MW:

375 aa, 40 kDa

Observed MW:

40 kDa

Purification Method:

Antigen affinity purification

Recommended Dilutions:

WB 1:500-1:2000

IP 0.5-4.0 µg for 1.0-3.0 mg of total
protein lysate

Applications

Tested Applications:

IP, WB, ELISA

Cited Applications:

WB, IHC, IF

Species Specificity:

mouse, rat

Cited Species:

rat, mouse

Positive Controls:

WB: mouse liver tissue,

IP: mouse liver tissue,

Background Information

The ADH1B gene encodes the beta subunit of class I alcohol dehydrogenase (ADH), an enzyme that catalyzes the rate-limiting step for ethanol metabolism: the oxidation of alcohol to acetaldehyde. Class I ADH is a homo- or heterodimeric molecule, formed by the association of 3 types of class I ADH subunits, alpha (ADH1A), beta, and gamma (ADH1C). ADH1B is also named as ADH2 and belongs to the zinc-containing alcohol dehydrogenase family. This protein can exist as a homodimer (PMID:19365573).

Notable Publications

Author	Pubmed ID	Journal	Application
Tomoko Kawai	27022678	Endocrinology	IF
Jie Yang	35351461	Exp Eye Res	IHC
Wenjun Zhao	35655427	J Sci Food Agric	WB

Storage

Storage:

Store at -20°C. Stable for one year after shipment.

Storage Buffer:

PBS with 0.02% sodium azide and 50% glycerol pH 7.3.

Aliquoting is unnecessary for -20°C storage

For technical support and original validation data for this product please contact:

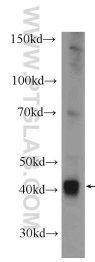
T: 4006900926

E: Proteintech-CN@ptglab.com

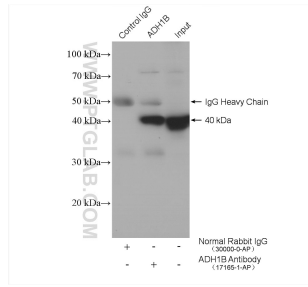
W: ptgcn.com

This product is exclusively available under Proteintech Group brand and is not available to purchase from any other manufacturer.

Selected Validation Data



mouse liver tissue were subjected to SDS PAGE followed by western blot with 17165-1-AP (ADH1B Antibody) at dilution of 1:1000 incubated at room temperature for 1.5 hours.



IP result of anti-ADH1B (IP:17165-1-AP, 4ug; Detection:17165-1-AP 1:500) with mouse liver tissue lysate 4000 ug.