

For Research Use Only

AMOTL1 Polyclonal antibody

Catalog Number: 16871-1-AP **4 Publications**



Basic Information

Catalog Number: 16871-1-AP	GenBank Accession Number: NM_130847	Purification Method: Antigen affinity purification
Size: 350 µg/ml	GeneID (NCBI): 154810	Recommended Dilutions: WB 1:500-1:1000
Source: Rabbit	UNIPROT ID: Q8IY63	
Isotype: IgG	Full Name: angiototin like 1	
	Calculated MW: 107 kDa	
	Observed MW: 107 kDa	

Applications

Tested Applications: WB, ELISA	Positive Controls: WB : HeLa cells,
Cited Applications: IF, WB	
Species Specificity: human, mouse, rat	
Cited Species: human, mouse	

Background Information

The protein encoded by this gene is a peripheral membrane protein that is a component of tight junctions or TJs. TJs form an apical junctional structure and act to control paracellular permeability and maintain cell polarity. This protein is related to angiototin, an angiotatin binding protein that regulates endothelial cell migration and capillary formation.

Notable Publications

Author	Pubmed ID	Journal	Application
Gang Xu	34480788	Environ Toxicol	WB
Rioto Suzuki	27179426	Pulm Pharmacol Ther	WB, IF
Anna Ulbricht	23434281	Curr Biol	WB

Storage

Storage:
Store at -20°C. Stable for one year after shipment.
Storage Buffer:
PBS with 0.02% sodium azide and 50% glycerol pH 7.3.
Aliquoting is unnecessary for -20°C storage

For technical support and original validation data for this product please contact:

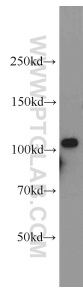
T: 4006900926

E: Proteintech-CN@ptglab.com

W: ptgcn.com

This product is exclusively available under Proteintech Group brand and is not available to purchase from any other manufacturer.

Selected Validation Data



HeLa cells were subjected to SDS PAGE followed by western blot with 16871-1-AP (AMOTL1 antibody) at dilution of 1:500 incubated at room temperature for 1.5 hours.