

IL-1 Beta Polyclonal antibody

Catalog Number: 16806-1-AP

597 Publications

Basic Information

Catalog Number:

16806-1-AP

Size:

700 µg/ml

Source:

Rabbit

Isotype:

IgG

Immunogen Catalog Number:

AG10295

GenBank Accession Number:

BC008678

GeneID (NCBI):

3553

ENSEMBL Gene ID:

ENSG00000125538

UNIPROT ID:

P01584

Full Name:

interleukin 1, beta

Calculated MW:

269 aa, 31 kDa

Observed MW:

30-35 kDa

Purification Method:

Antigen affinity purification

Recommended Dilutions:

WB 1:2000-1:10000

IHC 1:50-1:500

Applications

Tested Applications:

FC, IHC, WB, ELISA

Cited Applications:

ELISA, IF, IHC, WB

Species Specificity:

human

Cited Species:

human, rabbit, zebrafish, pig, canine, bovine

Note-IHC: suggested antigen retrieval with TE buffer pH 9.0; (*) Alternatively, antigen retrieval may be performed with citrate buffer pH 6.0

Positive Controls:

WB: LPS and Protein transport inhibitor treated THP-1 cells, human adrenal gland tissue, A431 cells

IHC: human tonsillitis tissue, human kidney tissue

Background Information

Interleukin-1 is a pro-inflammatory cytokine with multiple biological effects. The IL-1 gene family encodes three proteins: IL-1 α , IL-1 β and their naturally occurring inhibitor IL-1RN. IL-1 Beta (IL-1 β), mainly produced by blood monocytes and tissue macrophages, has been implicated in mediating both acute and chronic inflammation. IL-1 β is known to be involved in a variety of cellular activities, including cell proliferation, differentiation and apoptosis. IL-1 β is emerging as a key mediator of carcinogenesis that characterizes host-environment interactions. Human IL-1 β is synthesized as a 31 kDa precursor. To gain activity, the precursor must be cleaved by caspase-1 between Asp116 and Ala117 to yield a 17 kDa mature form.

Notable Publications

| Author | Pubmed ID | Journal | Application |
|--------------|-----------|-------------|-------------|
| Yangfei Yi | 36178080 | Orthop Surg | WB |
| JiangFan Yu | 36248980 | Front Oncol | WB |
| Chuyue Zhang | 30272163 | Hum Reprod | WB |

Storage

Storage:

Store at -20°C. Stable for one year after shipment.

Storage Buffer:

PBS with 0.02% sodium azide and 50% glycerol pH 7.3.

Aliquoting is unnecessary for -20°C storage

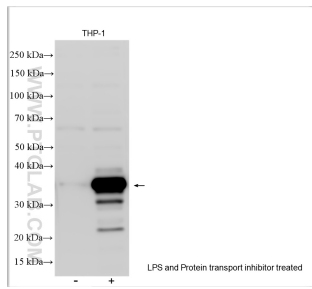
For technical support and original validation data for this product please contact:

T: 4006900926

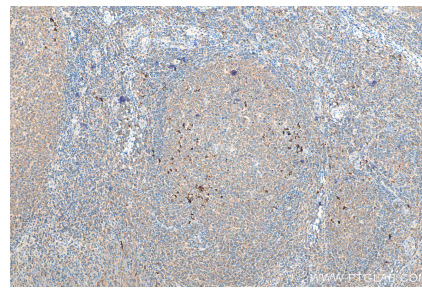
E: Proteintech-CN@ptglab.comW: ptgcn.com

This product is exclusively available under Proteintech Group brand and is not available to purchase from any other manufacturer.

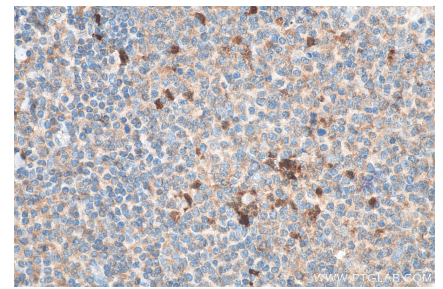
Selected Validation Data



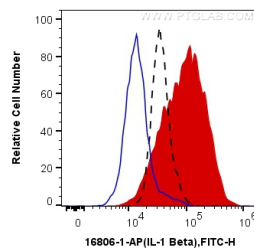
Non-treated THP-1 cells, THP-1 cells (treated with 100 ng/ml LPS for 3h, then added 300 ng/ml protein transport inhibitor for 3h) were subjected to SDS PAGE followed by western blot with 16806-1-AP (IL-1 Beta antibody) at dilution of 1:5000 incubated at room temperature for 1.5 hours.



Immunohistochemical analysis of paraffin-embedded human tonsillitis tissue slide using 16806-1-AP (IL-1 Beta antibody) at dilution of 1:200 (under 10x lens). Heat mediated antigen retrieval with Tris-EDTA buffer (pH 9.0).



Immunohistochemical analysis of paraffin-embedded human tonsillitis tissue slide using 16806-1-AP (IL-1 Beta antibody) at dilution of 1:200 (under 40x lens). Heat mediated antigen retrieval with Tris-EDTA buffer (pH 9.0).



1X10⁶ THP-1 cells untreated (dashed lines), LPS treated (red) were intracellularly stained with 0.4 ug Anti-Human IL-1 Beta (16806-1-AP) and CoraLite®488-Conjugated AffiniPure Goat Anti-Rabbit IgG(H+L) at dilution 1:1000 (red), or 0.4 ug Control Antibody (blue). Cells were fixed with 4% PFA and permeabilized with Flow Cytometry Perm Buffer (PF00011-C).