

For Research Use Only

IMPA1 Polyclonal antibody

Catalog Number: 16593-1-AP



Basic Information

Catalog Number:

16593-1-AP

Size:

400 µg/ml

Source:

Rabbit

Isotype:

IgG

Immunogen Catalog Number:

AG9632

GenBank Accession Number:

BC008381

GeneID (NCBI):

3612

UNIPROT ID:

P29218

Full Name:

inositol(myo)-1(or 4)-
monophosphatase 1

Calculated MW:

277 aa, 30 kDa

Observed MW:

30 kDa

Purification Method:

Antigen affinity purification

Recommended Dilutions:

WB 1:1000-1:4000

IHC 1:20-1:200

IF 1:10-1:100

Applications

Tested Applications:

IF/ICC, IHC, WB, ELISA

Species Specificity:

human, mouse, rat

Note-IHC: suggested antigen retrieval with TE buffer pH 9.0; (*) Alternatively, antigen retrieval may be performed with citrate buffer pH 6.0

Positive Controls:

WB: rat kidney tissue, human kidney tissue, human brain tissue, mouse kidney tissue

IHC: human brain tissue,

IF: HepG2 cells,

Background Information

IMPA1 is an enzyme that dephosphorylates myo-inositol monophosphate to generate free myo-inositol, a precursor of phosphatidylinositol, and is therefore an important modulator of intracellular signal transduction via the production of the second messengers myo-inositol 1,4,5-trisphosphate and diacylglycerol.

Storage

Storage:

Store at -20°C. Stable for one year after shipment.

Storage Buffer:

PBS with 0.02% sodium azide and 50% glycerol pH 7.3.

Aliquoting is unnecessary for -20°C storage

For technical support and original validation data for this product please contact:

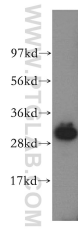
T: 4006900926

E: Proteintech-CN@ptglab.com

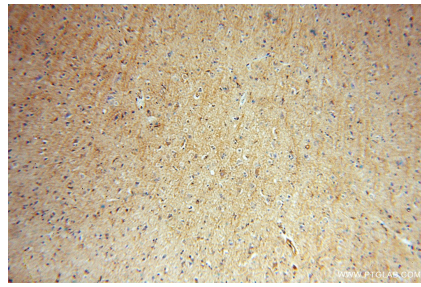
W: ptgcn.com

This product is exclusively available under Proteintech Group brand and is not available to purchase from any other manufacturer.

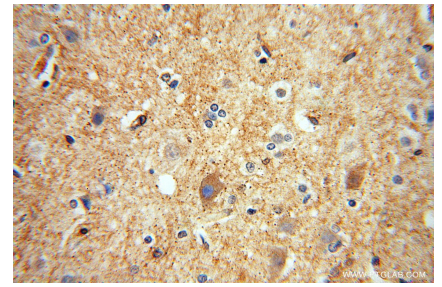
Selected Validation Data



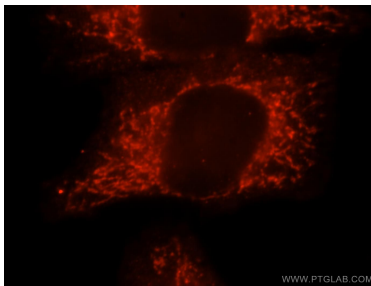
human kidney tissue were subjected to SDS PAGE followed by western blot with 16593-1-AP (IMPA1 antibody) at dilution of 1:300 incubated at room temperature for 1.5 hours.



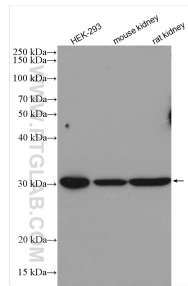
Immunohistochemical analysis of paraffin-embedded human brain using 16593-1-AP (IMPA1 antibody) at dilution of 1:50 (under 10x lens).



Immunohistochemical analysis of paraffin-embedded human brain using 16593-1-AP (IMPA1 antibody) at dilution of 1:50 (under 40x lens).



Immunofluorescent analysis of HepG2 cells, using IMPA1 antibody 16593-1-AP at 1:25 dilution and Rhodamine-labeled goat anti-rabbit IgG (red).



Various lysates were subjected to SDS PAGE followed by western blot with 16593-1-AP (IMPA1 antibody) at dilution of 1:2000 incubated at room temperature for 1.5 hours.