

# ADH4 Polyclonal antibody

Catalog Number: 16474-1-AP

Featured Product

2 Publications

## Basic Information

Catalog Number:

16474-1-AP

Size:

350 µg/ml

Source:

Rabbit

Isotype:

IgG

Immunogen Catalog Number:

AG9568

GenBank Accession Number:

BC022319

GeneID (NCBI):

127

UNIPROT ID:

P08319

Full Name:

alcohol dehydrogenase 4 (class II), pi polypeptide

Calculated MW:

380 aa, 40 kDa

Observed MW:

43 kDa

Purification Method:

Antigen affinity purification

Recommended Dilutions:

WB 1:500-1:2000

IHC 1:50-1:500

## Applications

Tested Applications:

IHC, WB, ELISA

Cited Applications:

IHC

Species Specificity:

human, mouse, rat

Cited Species:

human

**Note-IHC: suggested antigen retrieval with TE buffer pH 9.0; (\*) Alternatively, antigen retrieval may be performed with citrate buffer pH 6.0**

Positive Controls:

**WB** : HepG2 cells, mouse brain tissue, HeLa cells, mouse liver tissue, rat liver tissue

**IHC** : human kidney tissue, human heart tissue

## Background Information

This gene encodes the class II alcohol dehydrogenase 4 pi subunit, which is a member of the alcohol dehydrogenase family. Members of this enzyme family metabolize a wide variety of substrates, including ethanol, retinol, other aliphatic alcohols, hydroxysteroids, and lipid peroxidation products. Class II alcohol dehydrogenase is a homodimer composed of 2 pi subunits. ADH4 plays a critical role in alcoholism development and alcohol toxicology and is also associated with the development of esophageal cancer (PMID:33556337, 26039424, 24051444, 22147505).

## Notable Publications

| Author        | Pubmed ID | Journal       | Application |
|---------------|-----------|---------------|-------------|
| Yangying Zhou | 36341373  | Front Immunol | IHC         |
| Tingbo Ye     | 35677150  | Front Oncol   | IHC         |

## Storage

Storage:

Store at -20°C. Stable for one year after shipment.

Storage Buffer:

PBS with 0.02% sodium azide and 50% glycerol pH 7.3.

Aliquoting is unnecessary for -20°C storage

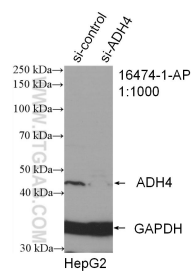
For technical support and original validation data for this product please contact:

T: 4006900926

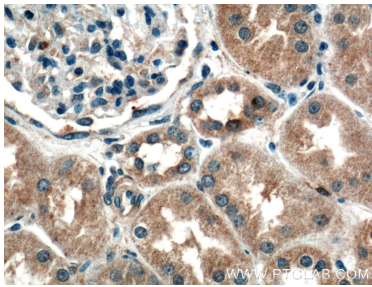
E: [Proteintech-CN@ptglab.com](mailto:Proteintech-CN@ptglab.com)W: [ptgcn.com](http://ptgcn.com)

**This product is exclusively available under Proteintech Group brand and is not available to purchase from any other manufacturer.**

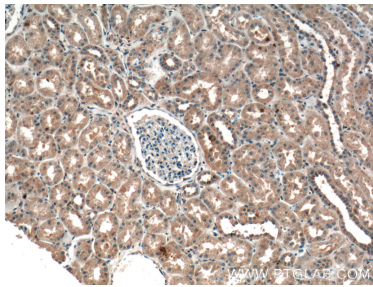
Selected Validation Data



WB result of ADH4 antibody (16474-1-AP; 1:1000; incubated at room temperature for 1.5 hours) with sh-Control and sh-ADH4 transfected HepG2 cells.



Immunohistochemical analysis of paraffin-embedded human kidney tissue slide using 16474-1-AP (ADH4 Antibody) at dilution of 1:200 (under 40x lens).



Immunohistochemical analysis of paraffin-embedded human kidney tissue slide using 16474-1-AP (ADH4 Antibody) at dilution of 1:200 (under 10x lens).