

For Research Use Only

# MRPL24 Polyclonal antibody

Catalog Number: 16224-1-AP **3 Publications**



## Basic Information

Catalog Number:

16224-1-AP

Size:

500 µg/ml

Source:

Rabbit

Isotype:

IgG

Immunogen Catalog Number:

AG9277

GenBank Accession Number:

BC016700

GeneID (NCBI):

79590

UNIPROT ID:

Q96A35

Full Name:

mitochondrial ribosomal protein L24

Calculated MW:

216 aa, 25 kDa

Observed MW:

25 kDa

Purification Method:

Antigen affinity purification

Recommended Dilutions:

WB 1:1000-1:8000

IP 0.5-4.0 µg for 1.0-3.0 mg of total protein lysate

## Applications

Tested Applications:

IP, WB, ELISA

Cited Applications:

WB

Species Specificity:

human, mouse, rat

Cited Species:

human, mouse

Positive Controls:

WB : mouse liver tissue,

IP : HEK-293 cells,

## Background Information

### Notable Publications

Author	Pubmed ID	Journal	Application
Uwe Richter	26504172	J Cell Biol	WB
Henrick Horita	29786648	Proteomes	WB
Sofia Zaganelli	28082677	J Biol Chem	WB

## Storage

Storage:

Store at -20°C. Stable for one year after shipment.

Storage Buffer:

PBS with 0.02% sodium azide and 50% glycerol pH 7.3.

Aliquoting is unnecessary for -20°C storage

For technical support and original validation data for this product please contact:

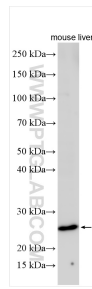
T: 4006900926

E: [Proteintech-CN@ptglab.com](mailto:Proteintech-CN@ptglab.com)

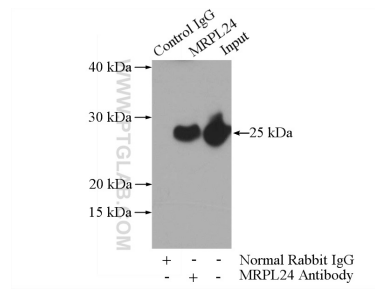
W: [ptgcn.com](http://ptgcn.com)

**This product is exclusively available under Proteintech Group brand and is not available to purchase from any other manufacturer.**

## Selected Validation Data



mouse liver tissue were subjected to SDS PAGE followed by western blot with 16224-1-AP (MRPL24 antibody) at dilution of 1:4000 incubated at room temperature for 1.5 hours.



IP result of anti-MRPL24 (IP:16224-1-AP, 4ug; Detection:16224-1-AP 1:1000) with HEK-293 cells lysate 1480ug.