

For Research Use Only

# REG Polyclonal antibody

Catalog Number: 15850-1-AP **2 Publications**



## Basic Information

<b>Catalog Number:</b> 15850-1-AP	<b>GenBank Accession Number:</b> BC005350	<b>Purification Method:</b> Antigen affinity purification
<b>Size:</b> 233 µg/ml	<b>GeneID (NCBI):</b> 5967	<b>Recommended Dilutions:</b> WB 1:1000-1:6000
<b>Source:</b> Rabbit	<b>UNIPROT ID:</b> P05451	
<b>Isotype:</b> IgG	<b>Full Name:</b> regenerating islet-derived 1 alpha	
<b>Immunogen Catalog Number:</b> AG8640	<b>Calculated MW:</b> 166 aa, 19 kDa	
	<b>Observed MW:</b> 19 kDa	

## Applications

<b>Tested Applications:</b> WB, ELISA	<b>Positive Controls:</b> WB : mouse pancreas tissue, rat pancreas tissue
<b>Cited Applications:</b> IF, WB	
<b>Species Specificity:</b> human, mouse, rat	
<b>Cited Species:</b> human, mouse	

## Background Information

### Notable Publications

Author	Pubmed ID	Journal	Application
Hongli Mao	33513463	Int Immunopharmacol	WB
Ze-Hua Xu	37531162	Ann N Y Acad Sci	WB,IF

## Storage

**Storage:**  
Store at -20°C. Stable for one year after shipment.  
**Storage Buffer:**  
PBS with 0.02% sodium azide and 50% glycerol pH 7.3.  
Aliquoting is unnecessary for -20°C storage

For technical support and original validation data for this product please contact:

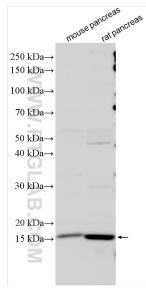
T: 4006900926

E: Proteintech-CN@ptglab.com

W: ptgcn.com

**This product is exclusively available under Proteintech Group brand and is not available to purchase from any other manufacturer.**

## Selected Validation Data



Various lysates were subjected to SDS PAGE followed by western blot with 15850-1-AP (REG antibody) at dilution of 1:3000 incubated at room temperature for 1.5 hours.