

For Research Use Only

Cytokeratin 7 Polyclonal antibody

Catalog Number: 15539-1-AP **17 Publications**



Basic Information

Catalog Number: 15539-1-AP	GenBank Accession Number: BC002700	Purification Method: Antigen affinity purification
Size: 700 µg/ml	GeneID (NCBI): 3855	Recommended Dilutions: WB 1:5000-1:50000 IHC 1:1000-1:30000 IF 1:350-1:1400
Source: Rabbit	UNIPROT ID: P08729	
Isotype: IgG	Full Name: keratin 7	
Immunogen Catalog Number: AG7895	Calculated MW: 469 aa, 51 kDa Observed MW: 51 kDa	

Applications

Tested Applications:
FC, IF/ICC, IHC, WB, ELISA

Cited Applications:
IF, IHC, WB

Species Specificity:
human, mouse, rat

Cited Species:
human, rat, mouse

Note-IHC: suggested antigen retrieval with TE buffer pH 9.0; (*) Alternatively, antigen retrieval may be performed with citrate buffer pH 6.0

Positive Controls:

WB: HeLa cells, rat liver tissue, A431 cells, mouse liver tissue, HepG2 cells, MCF-7 cells

IHC: human pancreas tissue, human lung cancer tissue, rat kidney tissue, human liver cancer tissue, mouse kidney tissue, human kidney tissue, human stomach cancer tissue, human lung tissue, human breast cancer tissue, human ovary tumor tissue

IF: HeLa cells,

Background Information

Keratins are a large family of proteins that form the intermediate filament cytoskeleton of epithelial cells, which are classified into two major sequence types. Type I keratins are a group of acidic intermediate filament proteins, including K9-K23, and the hair keratins Ha1-Ha8. Type II keratins are the basic or neutral counterparts to the acidic type I keratins, including K1-K8, and the hair keratins, Hb1-Hb6. KRT7 is a type II keratin. It is specifically expressed in the simple epithelia lining the cavities of the internal organs and in the gland ducts and blood vessels.

Notable Publications

Author	Pubmed ID	Journal	Application
Sainan Zhang	34603292	Front Immunol	IF
Ziyi Wang	36387215	Front Oncol	WB
Jiayi Zheng	29499763	Reprod Biol Endocrinol	IHC

Storage

Storage:
Store at -20°C. Stable for one year after shipment.
Storage Buffer:
PBS with 0.02% sodium azide and 50% glycerol pH 7.3.
Aliquoting is unnecessary for -20°C storage

For technical support and original validation data for this product please contact:

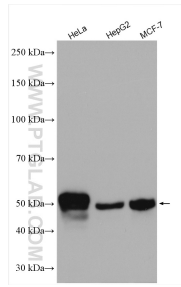
T: 4006900926

E: Proteintech-CN@ptglab.com

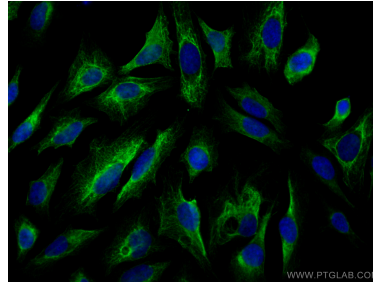
W: ptgcn.com

This product is exclusively available under Proteintech Group brand and is not available to purchase from any other manufacturer.

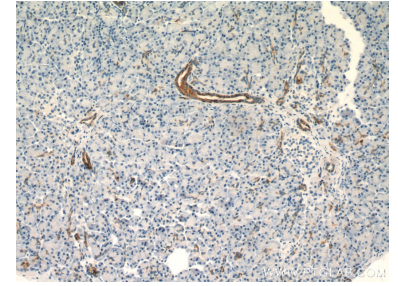
Selected Validation Data



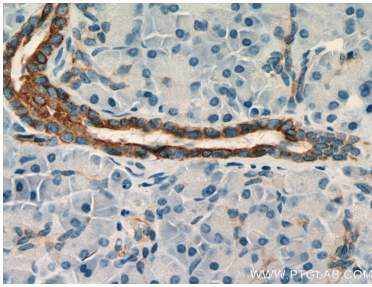
Various lysates were subjected to SDS PAGE followed by western blot with 15539-1-AP (Cytokeratin 7 antibody) at dilution of 1:10000 incubated at room temperature for 1.5 hours.



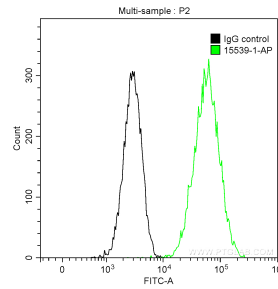
Immunofluorescent analysis of (-20°C Methanol) fixed HeLa cells using Cytokeratin 7 antibody (15539-1-AP) at dilution of 1:700 and CoraLite®488-Conjugated AffiniPure Goat Anti-Rabbit IgG(H+L).



Immunohistochemical analysis of paraffin-embedded human pancreas tissue slide using 15539-1-AP (Cytokeratin 7 antibody) at dilution of 1:25600 (under 10x lens. Heat mediated antigen retrieval with Tris-EDTA buffer (pH 9.0).



Immunohistochemical analysis of paraffin-embedded human pancreas tissue slide using 15539-1-AP (Cytokeratin 7 antibody) at dilution of 1:25600 (under 40x lens. Heat mediated antigen retrieval with Tris-EDTA buffer (pH 9.0).



1X10⁶ HeLa cells were stained with 0.2 ug Anti-Human Cytokeratin 7 (15539-1-AP) and CoraLite®488-Conjugated AffiniPure Goat Anti-Rabbit IgG(H+L) at dilution 1:1000 (green), and 0.2 ug Control Antibody. Cells were fixed with 90% MeOH.