

For Research Use Only

Transgelin-2-specific Polyclonal antibody



Catalog Number: 15508-1-AP

Featured Product

6 Publications

Basic Information

Catalog Number:

15508-1-AP

Size:

400 µg/ml

Source:

Rabbit

Isotype:

IgG

GenBank Accession Number:

NM_003564

GeneID (NCBI):

8407

UNIPROT ID:

P37802

Full Name:

transgelin 2

Calculated MW:

22 kDa

Observed MW:

22 kDa

Purification Method:

Antigen affinity purification

Recommended Dilutions:

WB 1:500-1:1000

IP 0.5-4.0 µg for 1.0-3.0 mg of total protein lysate

IHC 1:50-1:500

IF 1:200-1:800

Applications

Tested Applications:

FC, IF/ICC, IHC, IP, WB, ELISA

Cited Applications:

WB, IP, IF, IHC

Species Specificity:

Human

Cited Species:

human

Note-IHC: suggested antigen retrieval with TE buffer pH 9.0; (*) Alternatively, antigen retrieval may be performed with citrate buffer pH 6.0

Positive Controls:

WB : HeLa cells, HEK-293 cells

IP : L02 cells,

IHC : human oesophagus cancer tissue, human kidney tissue, human liver tissue

IF : HepG2 cells,

Background Information

The transgelin family is a group of proteins that belong to 22 kDa actin-related corpnin superfamily. Of all three isoforms, transgelin 1 is the best characterized. Transgelin 1, also known as SM22 alpha, is a specific marker for differentiated smooth muscle cells. Transgelin 2, also known as SM22 beta, is expressed by both smooth muscle and non-smooth muscle cells in a temporally and spatially regulated pattern. Transgelin 3, also known as NP25, is only found in highly differentiated neuronal cells. This antibody can bind transgelin 2 specifically, but not transgelin 1 or 3.

Notable Publications

Author	Pubmed ID	Journal	Application
Yan-Yan Du	26414725	J Gastroenterol Hepatol	WB, IHC
Yonglian Huang	34530821	Cancer Cell Int	WB
Xiao Yuan Y	23056327	PLoS One	WB,IF

Storage

Storage:

Store at -20°C. Stable for one year after shipment.

Storage Buffer:

PBS with 0.02% sodium azide and 50% glycerol pH 7.3.

Aliquoting is unnecessary for -20°C storage

For technical support and original validation data for this product please contact:

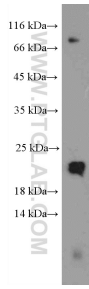
T: 4006900926

E: Proteintech-CN@ptglab.com

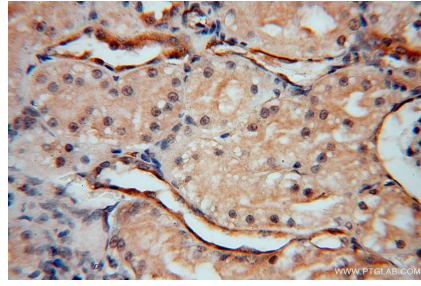
W: ptgcn.com

This product is exclusively available under Proteintech Group brand and is not available to purchase from any other manufacturer.

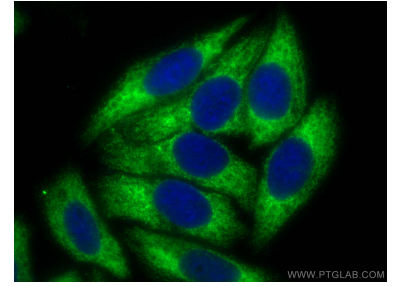
Selected Validation Data



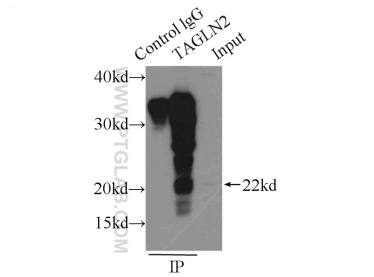
HeLa cells were subjected to SDS PAGE followed by western blot with 15508-1-AP (Transgelin-2-specific antibody) at dilution of 1:600 incubated at room temperature for 1.5 hours.



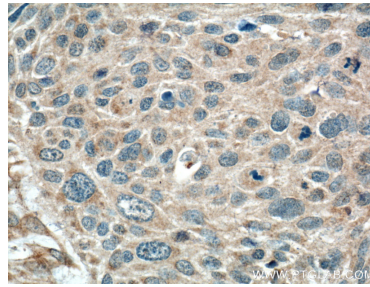
Immunohistochemical analysis of paraffin-embedded human kidney using 15508-1-AP (Transgelin-2-specific antibody) at dilution of 1:50 (under 40x lens).



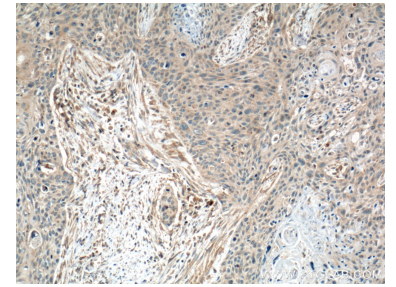
Immunofluorescent analysis of (-20°C Ethanol) fixed HepG2 cells using Transgelin-2-specific antibody (15508-1-AP) at dilution of 1:400 and CoraLite®488-Conjugated AffiniPure Goat Anti-Rabbit IgG(H+L).



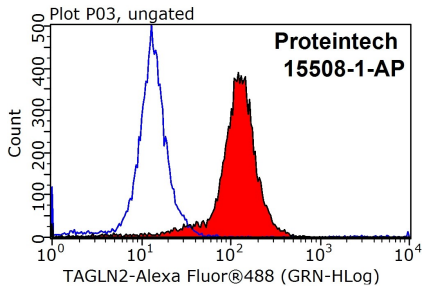
IP result of anti-Transgelin-2-specific (IP:15508-1-AP, 3ug; Detection:15508-1-AP 1:500) with L02 cells lysate 1000ug.



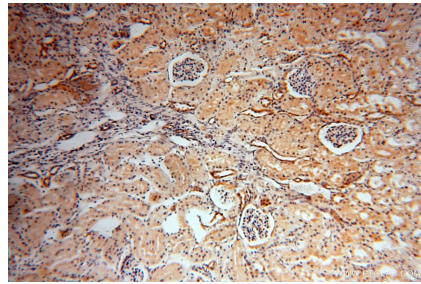
Immunohistochemical analysis of paraffin-embedded human oesophagus cancer tissue slide using 15508-1-AP (Transgelin-2-specific Antibody) at dilution of 1:200 (under 40x lens). Heat mediated antigen retrieval with Tris-EDTA buffer (pH 9.0).



Immunohistochemical analysis of paraffin-embedded human oesophagus cancer tissue slide using 15508-1-AP (Transgelin-2-specific Antibody) at dilution of 1:200 (under 10x lens). Heat mediated antigen retrieval with Tris-EDTA buffer (pH 9.0).



1X10⁶ HepG2 cells were stained with 0.2ug Transgelin-2-specific antibody (15508-1-AP, red) and control antibody (blue). Fixed with 90% MeOH blocked with 3% BSA (30 min). Alexa Fluor 488-conjugated AffiniPure Goat Anti-Rabbit IgG(H+L) with dilution 1:1000.



Immunohistochemical analysis of paraffin-embedded human kidney using 15508-1-AP (Transgelin-2-specific antibody) at dilution of 1:50 (under 10x lens).