

For Research Use Only

# UBE2E3 Polyclonal antibody

Catalog Number: 15488-1-AP **2 Publications**



## Basic Information

**Catalog Number:**

15488-1-AP

**Size:**

750 µg/ml

**Source:**

Rabbit

**Isotype:**

IgG

**Immunogen Catalog Number:**

AG7838

**GenBank Accession Number:**

BC003554

**GeneID (NCBI):**

10477

**UNIPROT ID:**

Q969T4

**Full Name:**

ubiquitin-conjugating enzyme E2E 3  
(UBC4/5 homolog, yeast)

**Calculated MW:**

23 kDa

**Observed MW:**

23-27 kDa

**Purification Method:**

Antigen affinity purification

**Recommended Dilutions:**

WB 1:500-1:3000

IHC 1:20-1:200

## Applications

**Tested Applications:**

IHC, WB, ELISA

**Cited Applications:**

WB

**Species Specificity:**

human, mouse, rat

**Cited Species:**

rat, mouse

**Note-IHC: suggested antigen retrieval with TE buffer pH 9.0; (\*) Alternatively, antigen retrieval may be performed with citrate buffer pH 6.0**

**Positive Controls:**

**WB:** Jurkat cells, mouse kidney tissue, mouse liver tissue, Y79 cells

**IHC:** human heart tissue, human skeletal muscle tissue

## Background Information

### Notable Publications

Author	Pubmed ID	Journal	Application
Kazuhiko Watabe	32686212	Neuropathology	WB
Jingxian Deng	37628741	Int J Mol Sci	WB

## Storage

**Storage:**

Store at -20°C. Stable for one year after shipment.

**Storage Buffer:**

PBS with 0.02% sodium azide and 50% glycerol pH 7.3.

Aliquoting is unnecessary for -20°C storage

For technical support and original validation data for this product please contact:

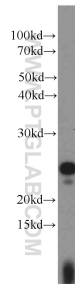
T: 4006900926

E: Proteintech-CN@ptglab.com

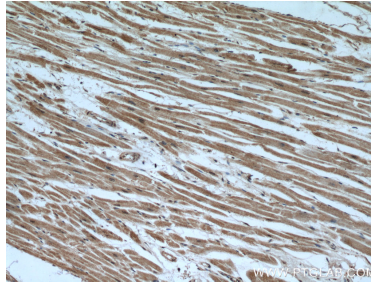
W: ptgcn.com

**This product is exclusively available under Proteintech Group brand and is not available to purchase from any other manufacturer.**

## Selected Validation Data



Jurkat cells were subjected to SDS PAGE followed by western blot with 15488-1-AP (UBE2E3 antibody) at dilution of 1:1000 incubated at room temperature for 1.5 hours.



Immunohistochemical analysis of paraffin-embedded human heart using 15488-1-AP (UBE2E3 antibody) at dilution of 1:50 (under 10x lens).



Immunohistochemical analysis of paraffin-embedded human heart using 15488-1-AP (UBE2E3 antibody) at dilution of 1:50 (under 40x lens).