

# TIM22 Polyclonal antibody

Catalog Number: 14927-1-AP

Featured Product

28 Publications

## Basic Information

## Catalog Number:

14927-1-AP

## Size:

650 µg/ml

## Source:

Rabbit

## Isotype:

IgG

## Immunogen Catalog Number:

AG6689

## GenBank Accession Number:

BC002324

## GeneID (NCBI):

29928

## UNIPROT ID:

Q9Y584

## Full Name:

translocase of inner mitochondrial membrane 22 homolog (yeast)

## Calculated MW:

20 kDa

## Observed MW:

20 kDa

## Purification Method:

Antigen affinity purification

## Recommended Dilutions:

WB 1:1000-1:8000

IP 0.5-4.0 µg for 1.0-3.0 mg of total protein lysate

IHC 1:50-1:500

## Applications

## Tested Applications:

IHC, IP, WB, ELISA

## Cited Applications:

WB

## Species Specificity:

human, mouse, rat

## Cited Species:

human, mouse

**Note-IHC: suggested antigen retrieval with TE buffer pH 9.0; (\*) Alternatively, antigen retrieval may be performed with citrate buffer pH 6.0**

## Positive Controls:

WB : HepG2 cells, MCF-7 cells, mouse liver tissue, rat liver tissue

IP : mouse liver tissue,

IHC : human liver tissue,

## Background Information

TIM22 is a translocase localized in mitochondrial inner membrane. It is implicated in import of nuclear-encoded mitochondrial preproteins to the mitochondria. TIM22 is the essential core of protein insertion complex (TIM22 complex) that consists of TIM22, TIM54, TIM18, and TIM12.

## Notable Publications

Author	Pubmed ID	Journal	Application
Paula Clemente	36180430	Nat Commun	WB
Shrijal S Shah	31558683	J Am Soc Nephrol	WB
Anusha Valpadashi	33125709	FEBS Lett	WB

## Storage

## Storage:

Store at -20°C. Stable for one year after shipment.

## Storage Buffer:

PBS with 0.02% sodium azide and 50% glycerol pH 7.3.

Aliquoting is unnecessary for -20°C storage

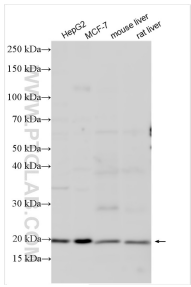
For technical support and original validation data for this product please contact:

T: 4006900926

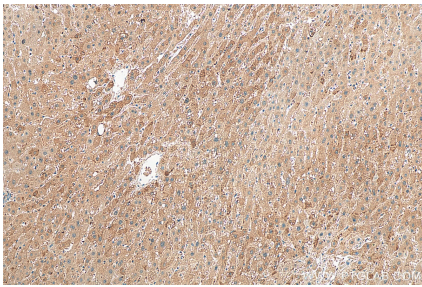
E: [Proteintech-CN@ptglab.com](mailto:Proteintech-CN@ptglab.com)W: [ptgcn.com](http://ptgcn.com)

This product is exclusively available under Proteintech Group brand and is not available to purchase from any other manufacturer.

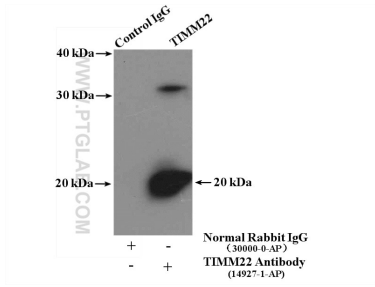
Selected Validation Data



Various lysates were subjected to SDS PAGE followed by western blot with 14927-1-AP (TIM22 antibody) at dilution of 1:4000 incubated at room temperature for 1.5 hours.



Immunohistochemical analysis of paraffin-embedded human liver tissue slide using 14927-1-AP (TIM22 antibody) at dilution of 1:200 (under 10x lens). Heat mediated antigen retrieval with Tris-EDTA buffer (pH 9.0).



IP result of anti-TIM22 (IP:14927-1-AP, 4ug; Detection:14927-1-AP 1:1000) with mouse liver tissue lysate 4000ug.