

For Research Use Only

ARG2 Polyclonal antibody

Catalog Number: 14825-1-AP

Featured Product

9 Publications



Basic Information

Catalog Number:

14825-1-AP

Size:

700 µg/ml

Source:

Rabbit

Isotype:

IgG

Immunogen Catalog Number:

AG6609

GenBank Accession Number:

BC001350

GeneID (NCBI):

384

UNIPROT ID:

P78540

Full Name:

arginase, type II

Calculated MW:

39 kDa

Observed MW:

39-42 kDa

Purification Method:

Antigen affinity purification

Recommended Dilutions:

WB 1:1000-1:4000

IHC 1:50-1:500

Applications

Tested Applications:

IHC, WB, ELISA

Cited Applications:

WB, IF, IHC

Species Specificity:

human, mouse, rat

Cited Species:

human, rat, mouse

Note-IHC: suggested antigen retrieval with TE buffer pH 9.0; (*) Alternatively, antigen retrieval may be performed with citrate buffer pH 6.0

Positive Controls:

WB: Caco-2 cells, HEK-293 cells, mouse liver tissue, rat liver tissue

IHC: human prostate cancer tissue, human kidney tissue

Background Information

ARG2(Arginase-2, mitochondrial) is also named as kidney-type arginase, non-hepatic arginase and belongs to the arginase family. It may play a role in the regulation of extra-urea cycle arginine metabolism and also in down-regulation of nitric oxide synthesis.

Notable Publications

Author	Pubmed ID	Journal	Application
Hagai Tavori	25183802	J Lipid Res	WB
Lu Gao	30889486	Biomed Pharmacother	WB
Katherine M Halloran	35098299	Biol Reprod	IHC

Storage

Storage:

Store at -20°C. Stable for one year after shipment.

Storage Buffer:

PBS with 0.02% sodium azide and 50% glycerol pH 7.3.

Aliquoting is unnecessary for -20°C storage

For technical support and original validation data for this product please contact:

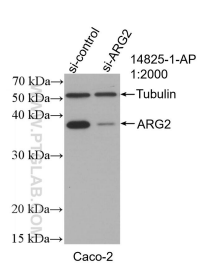
T: 4006900926

E: Proteintech-CN@ptglab.com

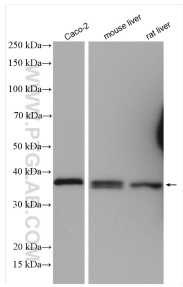
W: ptgcn.com

This product is exclusively available under Proteintech Group brand and is not available to purchase from any other manufacturer.

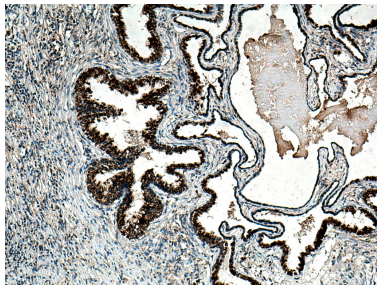
Selected Validation Data



WB result of ARG2 antibody (14825-1-AP; 1:2000; incubated at room temperature for 1.5 hours) with sh-Control and sh-ARG2 transfected Caco-2 cells.



Various lysates were subjected to SDS PAGE followed by western blot with 14825-1-AP (ARG2 antibody) at dilution of 1:2000 incubated at room temperature for 1.5 hours.



Immunohistochemical analysis of paraffin-embedded human prostate cancer tissue slide using 14825-1-AP (ARG2 antibody) at dilution of 1:200 (under 10x lens). Heat mediated antigen retrieval with Tris-EDTA buffer (pH 9.0).