

For Research Use Only

ACVRL1 Polyclonal antibody

Catalog Number: 14745-1-AP **6 Publications**



Basic Information

Catalog Number:

14745-1-AP

Size:

650 µg/ml

Source:

Rabbit

Isotype:

IgG

Immunogen Catalog Number:

AG6449

GenBank Accession Number:

BC042637

GeneID (NCBI):

94

UNIPROT ID:

P37023

Full Name:

activin A receptor type II-like 1

Calculated MW:

56 kDa

Observed MW:

63 kDa

Purification Method:

Antigen affinity purification

Recommended Dilutions:

WB 1:500-1:1000

IP 0.5-4.0 µg for 1.0-3.0 mg of total protein lysate

IHC 1:100-1:400

Applications

Tested Applications:

WB, IP, FC, IHC, ELISA

Cited Applications:

WB, IP, FC, IHC

Species Specificity:

human

Cited Species:

human, mouse

Note-IHC: suggested antigen retrieval with TE buffer pH 9.0; (*) Alternatively, antigen retrieval may be performed with citrate buffer pH 6.0

Positive Controls:

WB : human placenta tissue,

IP : Jurkat cells,

IHC : human heart tissue, human lymphoma tissue

Background Information

ACVRL1 (also known as ALK1) is a type I cell-surface receptor for the TGF-beta superfamily of ligands. It shares with other type I receptors a high degree of similarity in serine-threonine kinase subdomains, a glycine- and serine-rich region (called the GS domain) preceding the kinase domain, and a short C-terminal tail. ACVRL1 is highly expressed in endothelial cells and has a critical role in the control of blood vessel development and repair (PMID: 8640225). Mutations in the ACVRL1 gene are associated with hemorrhagic telangiectasia type 2.

Notable Publications

Author	Pubmed ID	Journal	Application
Yusuke Kimishima	34702814	Nat Commun	WB,FC
Houping Chen	33245175	Cell Biol Int	WB,IP
Yesheng Fu	34157307	Mol Cell	WB

Storage

Storage:

Store at -20°C. Stable for one year after shipment.

Storage Buffer:

PBS with 0.02% sodium azide and 50% glycerol pH 7.3.

Aliquoting is unnecessary for -20°C storage

For technical support and original validation data for this product please contact:

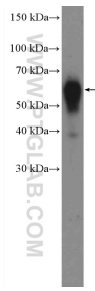
T: 4006900926

E: Proteintech-CN@ptglab.com

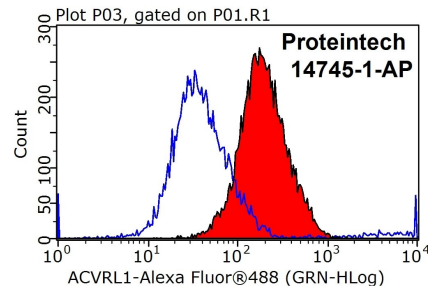
W: ptgcn.com

This product is exclusively available under Proteintech Group brand and is not available to purchase from any other manufacturer.

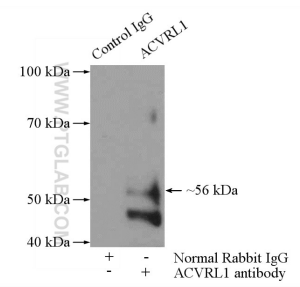
Selected Validation Data



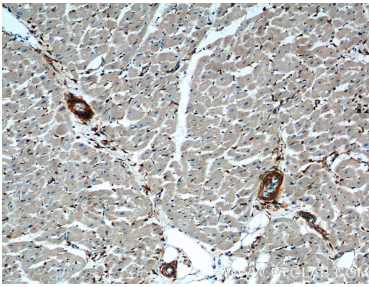
human placenta tissue were subjected to SDS PAGE followed by western blot with 14745-1-AP (ACVRL1 Antibody) at dilution of 1:600 incubated at room temperature for 1.5 hours.



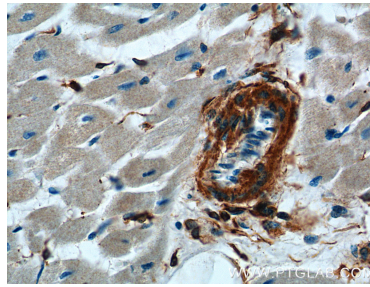
1×10^6 Jurkat cells were stained with 0.2ug ACVRL1 antibody (14745-1-AP, red) and control antibody (blue). Fixed with 90% MeOH blocked with 3% BSA (30 min). Alexa Fluor 488-conjugated AffiniPure Goat Anti-Rabbit IgG(H+L) with dilution 1:1000.



IP result of anti-ACVRL1 (IP:14745-1-AP, 4ug; Detection:14745-1-AP 1:300) with Jurkat cells lysate 2400ug.



Immunohistochemical analysis of paraffin-embedded human heart tissue slide using 14745-1-AP (ACVRL1 Antibody) at dilution of 1:200 (under 10x lens).



Immunohistochemical analysis of paraffin-embedded human heart tissue slide using 14745-1-AP (ACVRL1 Antibody) at dilution of 1:200 (under 40x lens).