

For Research Use Only

# NCF4 Polyclonal antibody

Catalog Number: 14648-1-AP



## Basic Information

<b>Catalog Number:</b> 14648-1-AP	<b>GenBank Accession Number:</b> BC002798	<b>Purification Method:</b> Antigen affinity purification
<b>Size:</b> 200 µg/ml	<b>GeneID (NCBI):</b> 4689	<b>Recommended Dilutions:</b> WB 1:200-1:1000 IHC 1:20-1:200 IF 1:50-1:500
<b>Source:</b> Rabbit	<b>UNIPROT ID:</b> Q15080	
<b>Isotype:</b> IgG	<b>Full Name:</b> neutrophil cytosolic factor 4, 40kDa	
<b>Immunogen Catalog Number:</b> AG6241	<b>Calculated MW:</b> 39 kDa	
	<b>Observed MW:</b> 41 kDa	

## Applications

**Tested Applications:**  
IF/ICC, IHC, WB, ELISA

**Species Specificity:**  
human, mouse, rat

**Note-IHC: suggested antigen retrieval with TE buffer pH 9.0; (\*) Alternatively, antigen retrieval may be performed with citrate buffer pH 6.0**

**Positive Controls:**

WB : L02 cells,  
IHC : human heart tissue,  
IF : L02 cells,

## Background Information

NCF4, also named as p40phox, was the last NADPH oxidase subunit to be discovered, and although there is evidence of its both positive and negative effects on oxidase function. Catalog#14648-1-AP is a rabbit polyclonal antibody raised against the full-length of human NCF4. The MW of this protein is 40 kDa, and this antibody specially recognises the 40 kDa protein.

## Storage

**Storage:**  
Store at -20°C. Stable for one year after shipment.  
**Storage Buffer:**  
PBS with 0.02% sodium azide and 50% glycerol pH 7.3.  
Aliquoting is unnecessary for -20°C storage

For technical support and original validation data for this product please contact:

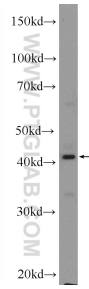
T: 4006900926

E: Proteintech-CN@ptglab.com

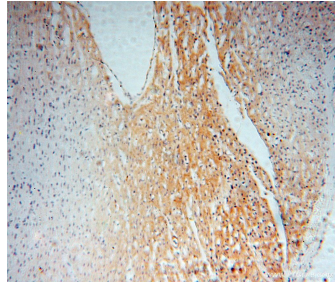
W: ptgcn.com

**This product is exclusively available under Proteintech Group brand and is not available to purchase from any other manufacturer.**

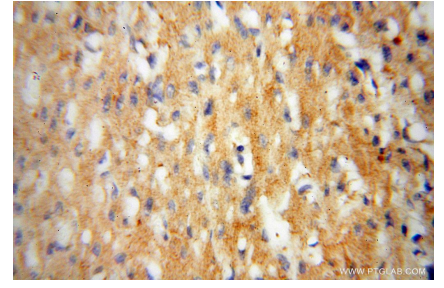
## Selected Validation Data



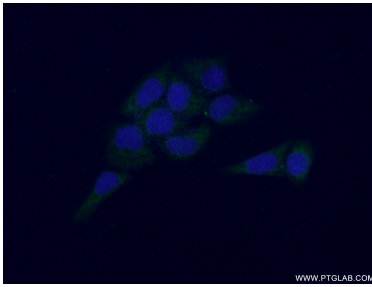
L02 cells were subjected to SDS PAGE followed by western blot with 14648-1-AP (NCF4 Antibody) at dilution of 1:300 incubated at room temperature for 1.5 hours.



Immunohistochemical analysis of paraffin-embedded human heart using 14648-1-AP (NCF4 antibody) at dilution of 1:50 (under 10x lens).



Immunohistochemical analysis of paraffin-embedded human heart using 14648-1-AP (NCF4 antibody) at dilution of 1:50 (under 40x lens).



Immunofluorescent analysis of (-20°C Ethanol) fixed L02 cells using 14648-1-AP (NCF4 antibody) at dilution of 1:50 and Alexa Fluor 488-conjugated AffiniPure Goat Anti-Rabbit IgG(H+L).