

For Research Use Only

# Alpha Tubulin Polyclonal antibody

Catalog Number: 14555-1-AP

9 Publications



## Basic Information

Catalog Number:

14555-1-AP

Size:

500 µg/ml

Source:

Rabbit

Isotype:

IgG

Immunogen Catalog Number:

AG6038

GenBank Accession Number:

BC050637

GeneID (NCBI):

7846

UNIPROT ID:

Q71U36

Full Name:

tubulin, alpha 1a

Calculated MW:

50 kDa

Observed MW:

50-55 kDa

Purification Method:

Antigen affinity purification

Recommended Dilutions:

WB 1:500-1:3000

IHC 1:250-1:1000

IF 1:10-1:100

## Applications

Tested Applications:

IF/ICC, IHC, WB, ELISA

Cited Applications:

IF, IHC, WB

Species Specificity:

human, mouse, rat

Cited Species:

human, mouse

**Note-IHC: suggested antigen retrieval with TE buffer pH 9.0; (\*) Alternatively, antigen retrieval may be performed with citrate buffer pH 6.0**

Positive Controls:

WB : mouse brain tissue, mouse cerebellum tissue

IHC : mouse testis tissue,

IF : HepG2 cells,

## Background Information

### Notable Publications

Author	Pubmed ID	Journal	Application
Mohamed Bourmoum	29724911	J Cell Sci	WB
Shaqayeq Roqanian	35170061	J Neurosci Res	WB
Cecilia D Gerstner	36611941	Cells	IHC

## Storage

Storage:

Store at -20°C. Stable for one year after shipment.

Storage Buffer:

PBS with 0.02% sodium azide and 50% glycerol pH 7.3.

Aliquoting is unnecessary for -20°C storage

For technical support and original validation data for this product please contact:

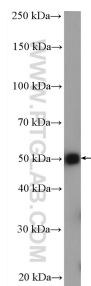
T: 4006900926

E: [Proteintech-CN@ptglab.com](mailto:Proteintech-CN@ptglab.com)

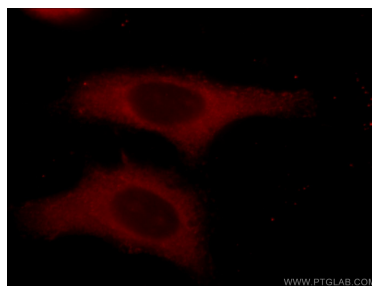
W: [ptgcn.com](http://ptgcn.com)

This product is exclusively available under Proteintech Group brand and is not available to purchase from any other manufacturer.

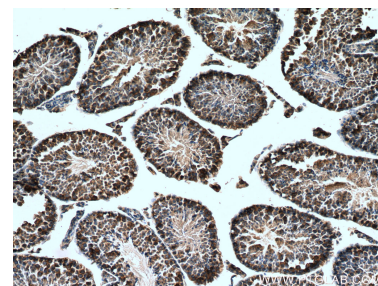
## Selected Validation Data



mouse brain tissue were subjected to SDS PAGE followed by western blot with 14555-1-AP (alpha Tubulin antibody) at dilution of 1:1500 incubated at room temperature for 1.5 hours.



Immunofluorescent analysis of HepG2 cells using 14555-1-AP (alpha Tubulin antibody) at dilution of 1:25 and Rhodamine-Goat anti-Rabbit IgG.



Immunohistochemical analysis of paraffin-embedded mouse testis tissue slide using 14555-1-AP (Alpha Tubulin antibody) at dilution of 1:500 (under 10x lens). Heat mediated antigen retrieval with Tris-EDTA buffer (pH 9.0).