

HE4 Polyclonal antibody

Catalog Number: 14406-1-AP

6 Publications

Basic Information

Catalog Number:

14406-1-AP

Size:

500 µg/ml

Source:

Rabbit

Isotype:

IgG

Immunogen Catalog Number:

AG5684

GenBank Accession Number:

BC046106

GeneID (NCBI):

10406

UNIPROT ID:

Q14508

Full Name:

WAP four-disulfide core domain 2

Calculated MW:

13 kDa

Purification Method:

Antigen affinity purification

Recommended Dilutions:

IHC 1:50-1:500

IF 1:50-1:500

Applications

Tested Applications:

IF/ICC, IHC, ELISA

Cited Applications:

IHC, WB

Species Specificity:

human

Cited Species:

human, mouse

Note-IHC: suggested antigen retrieval with TE buffer pH 9.0; (*) Alternatively, antigen retrieval may be performed with citrate buffer pH 6.0

Positive Controls:

IHC : human ovary tumor tissue, human testis tissue

IF : MCF-7 cells,

Background Information

WFDC2, also named as HE4, is a member of the WFDC domain family. The WFDC domain, or WAP Signature motif, contains eight cysteines forming four disulfide bonds at the core of the protein, and functions as a protease inhibitor in many family members. HE4 is expressed in a number of normal tissues, and it is also highly expressed in a number of tumors cells lines, such ovarian, colon, breast, lung and renal cells lines. In some study, HE4 was referred to as a biomarker for ovarian carcinoma.

Notable Publications

Author	Pubmed ID	Journal	Application
Ran Chen	29228604	Oncotarget	WB
Dandan Fang	31606687	Biosens Bioelectron	
Jian Fang	35297435	Food Funct	WB

Storage

Storage:

Store at -20°C. Stable for one year after shipment.

Storage Buffer:

PBS with 0.02% sodium azide and 50% glycerol pH 7.3.

Aliquoting is unnecessary for -20°C storage

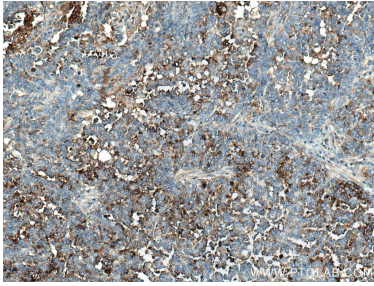
For technical support and original validation data for this product please contact:

T: 4006900926

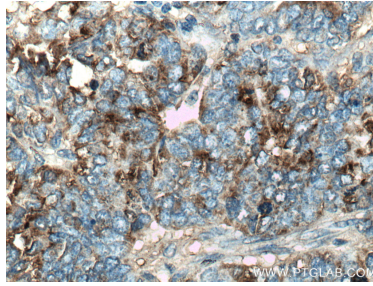
E: Proteintech-CN@ptglab.comW: ptgcn.com

This product is exclusively available under Proteintech Group brand and is not available to purchase from any other manufacturer.

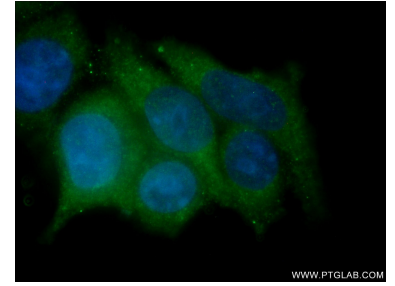
Selected Validation Data



Immunohistochemical analysis of paraffin-embedded human ovary tumor tissue slide using 14406-1-AP (HE4 antibody) at dilution of 1:200 (under 10x lens. Heat mediated antigen retrieval with Tris-EDTA buffer (pH 9.0)).



Immunohistochemical analysis of paraffin-embedded human ovary tumor tissue slide using 14406-1-AP (HE4 antibody) at dilution of 1:200 (under 40x lens. Heat mediated antigen retrieval with Tris-EDTA buffer (pH 9.0)).



Immunofluorescent analysis of (-20°C Ethanol) fixed MCF-7 cells using 14406-1-AP (HE4 antibody) at dilution of 1:200 and CoraLite488-Conjugated AffiniPure Goat Anti-Rabbit IgG(H+L).