

For Research Use Only

# TRIM24 Polyclonal antibody

Catalog Number: 14208-1-AP

Featured Product

39 Publications



## Basic Information

**Catalog Number:**

14208-1-AP

**Size:**

800 µg/ml

**Source:**

Rabbit

**Isotype:**

IgG

**Immunogen Catalog Number:**

AG5417

**GenBank Accession Number:**

BC028689

**GeneID (NCBI):**

8805

**UNIPROT ID:**

O15164

**Full Name:**

tripartite motif-containing 24

**Calculated MW:**

117 kDa

**Observed MW:**

117 kDa

**Purification Method:**

Antigen affinity purification

**Recommended Dilutions:**

WB 1:2000-1:12000

IP 0.5-4.0 µg for 1.0-3.0 mg of total protein lysate

IHC 1:50-1:200

IF 1:50-1:500

## Applications

**Tested Applications:**

IF/ICC, IHC, IP, WB, ELISA

**Cited Applications:**

WB, IP, IF, IHC, CoIP, ChIP

**Species Specificity:**

human, mouse, rat

**Cited Species:**

human, mouse

**Note-IHC: suggested antigen retrieval with TE buffer pH 9.0; (\*) Alternatively, antigen retrieval may be performed with citrate buffer pH 6.0**

**Positive Controls:**

**WB:** HeLa cells, L02 cells, BGC-823 cells, human heart tissue, mouse skeletal muscle tissue, MCF-7 cells

**IP:** MCF-7 cells,

**IHC:** human prostate cancer tissue,

**IF:** HeLa cells,

## Background Information

TRIM24, also named as RNF82, TIF1 and TIF1A, interacts selectively in vitro with the AF2-activating domain of the estrogen receptors. Association with DNA-bound estrogen receptors, it requires the presence of estradiol. It is a regulation protein of P53. Defects in TRIM24 are a cause of thyroid papillary carcinoma (TPC) which is a common tumor of the thyroid that typically arises as an irregular, solid or cystic mass from otherwise normal thyroid tissue.

## Notable Publications

| Author     | Pubmed ID | Journal               | Application |
|------------|-----------|-----------------------|-------------|
| Jun Chi    | 27689360  | Aging (Albany NY)     | WB, IHC     |
| Tao Yu     | 31554795  | Nat Commun            | WB          |
| Yanai Zhan | 26396593  | Epigenetics Chromatin | WB, IF, IP  |

## Storage

**Storage:**

Store at -20°C. Stable for one year after shipment.

**Storage Buffer:**

PBS with 0.02% sodium azide and 50% glycerol pH 7.3.

Aliquoting is unnecessary for -20°C storage

For technical support and original validation data for this product please contact:

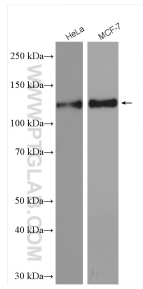
T: 4006900926

E: Proteintech-CN@ptglab.com

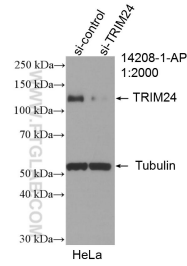
W: ptgcn.com

**This product is exclusively available under Proteintech Group brand and is not available to purchase from any other manufacturer.**

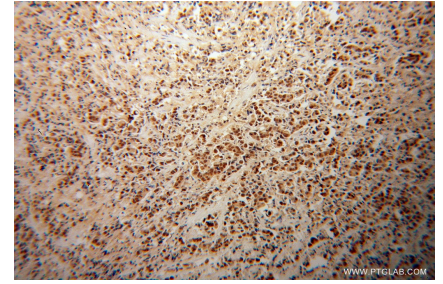
## Selected Validation Data



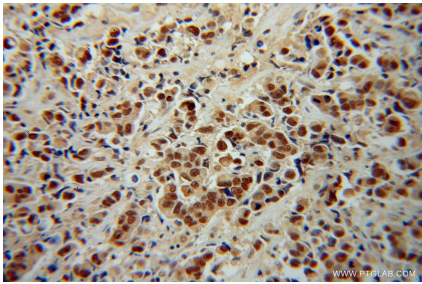
Various lysates were subjected to SDS PAGE followed by western blot with 14208-1-AP (TRIM24 antibody) at dilution of 1:6000 incubated at room temperature for 1.5 hours.



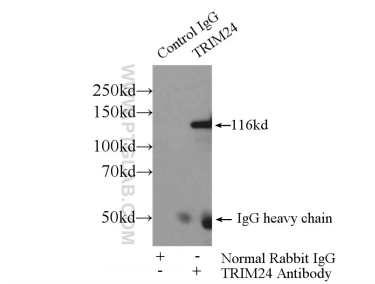
WB result of TRIM24 antibody (14208-1-AP; 1:2000; incubated at room temperature for 1.5 hours) with sh-Control and sh-TRIM24 transfected HeLa cells.



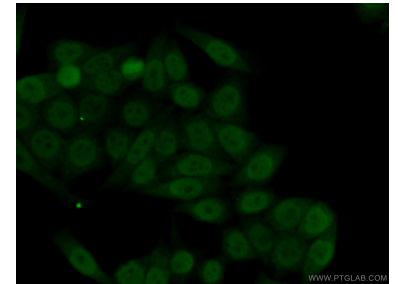
Immunohistochemical analysis of paraffin-embedded human prostate cancer using 14208-1-AP (TRIM24 antibody) at dilution of 1:100 (under 10x lens).



Immunohistochemical analysis of paraffin-embedded human prostate cancer using 14208-1-AP (TRIM24 antibody) at dilution of 1:100 (under 40x lens).



IP result of anti-TRIM24 (IP:14208-1-AP, 4ug; Detection:14208-1-AP 1:800) with MCF-7 cells lysate 4000ug.



Immunofluorescent analysis of (10% Formaldehyde) fixed HeLa cells using 14208-1-AP (TRIM24 antibody) at dilution of 1:50 and Alexa Fluor 488-conjugated AffiniPure Goat Anti-Rabbit IgG(H+L).