

# Alpha 1B-Glycoprotein Polyclonal antibody

Catalog Number: **14181-1-AP**

## Basic Information

|  |  |   |
|--|--|---|
| <b>Catalog Number:</b><br>14181-1-AP       | <b>GenBank Accession Number:</b><br>BC035719                     | <b>Purification Method:</b><br>Antigen affinity purification                              |
| <b>Size:</b><br>500 µg/ml                  | <b>GeneID (NCBI):</b><br>1                                       | <b>Recommended Dilutions:</b><br>WB 1:2000-1:20000<br>IHC 1:2500-1:10000<br>IF 1:10-1:100 |
| <b>Source:</b><br>Rabbit                   | <b>UNIPROT ID:</b><br>P04217                                     |   |
| <b>Isotype:</b><br>IgG                     | <b>Full Name:</b><br>alpha-1-B glycoprotein                      |   |
| <b>Immunogen Catalog Number:</b><br>AG5414 | <b>Calculated MW:</b><br>54 kDa<br><b>Observed MW:</b><br>65 kDa |   |

## Applications

**Tested Applications:**  
IF/ICC, IHC, WB, ELISA

**Species Specificity:**  
human, mouse

**Note-IHC: suggested antigen retrieval with TE buffer pH 9.0; (\*) Alternatively, antigen retrieval may be performed with citrate buffer pH 6.0**

**Positive Controls:**

**WB :** human plasma tissue, BxPC-3 cells, MCF-7 cells, mouse kidney tissue

**IHC :** human hepatocirrhosis tissue,

**IF :** HepG2 cells,

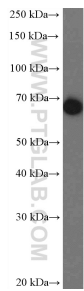
## Background Information

Alpha-1B-glycoprotein (A1BG) is a plasma protein and is a member of the immunoglobulin superfamily. A1BG contains 474 amino acids and has 5 intrachain disulfide bonds. It has been reported that cysteine-rich secretory protein 3 (CRISP-3) is a specific and high-affinity ligand of A1BG. A1BG-CRISP-3 complex displays a similar function in protecting the circulation from a potentially harmful effect of free CRISP3 (PMID: 15461460).

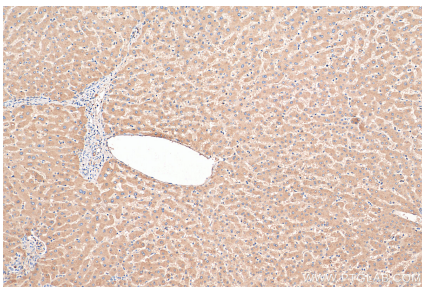
## Storage

**Storage:**  
Store at -20°C. Stable for one year after shipment.  
**Storage Buffer:**  
PBS with 0.02% sodium azide and 50% glycerol pH 7.3.  
Aliquoting is unnecessary for -20°C storage

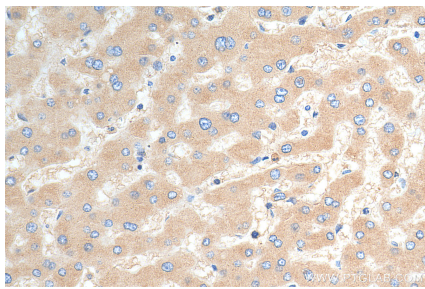
# Selected Validation Data



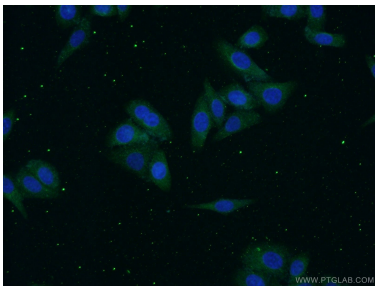
human plasma were subjected to SDS PAGE followed by western blot with 14181-1-AP (alpha-1B-glycoprotein antibody) at dilution of 1:5000 incubated at room temperature for 1.5 hours.



Immunohistochemical analysis of paraffin-embedded human hepatocirrhosis tissue slide using 14181-1-AP (Alpha 1B-Glycoprotein antibody) at dilution of 1:5000 (under 10x lens). Heat mediated antigen retrieval with Tris-EDTA buffer (pH 9.0).



Immunohistochemical analysis of paraffin-embedded human hepatocirrhosis tissue slide using 14181-1-AP (Alpha 1B-Glycoprotein antibody) at dilution of 1:5000 (under 40x lens). Heat mediated antigen retrieval with Tris-EDTA buffer (pH 9.0).



Immunofluorescent analysis of (-20°C Ethanol) fixed HepG2 cells using 14181-1-AP (alpha-1B-glycoprotein antibody) at dilution of 1:25 and Alexa Fluor 488-Conjugated AffiniPure Goat Anti-Rabbit IgG(H+L).