

For Research Use Only

ALDH1A2 Polyclonal antibody

Catalog Number: 13951-1-AP **11 Publications**



Basic Information

Catalog Number: 13951-1-AP	GenBank Accession Number: BC030589	Purification Method: Antigen affinity purification
Size: 550 µg/ml	GeneID (NCBI): 8854	Recommended Dilutions: WB 1:500-1:2000
Source: Rabbit	UNIPROT ID: O94788	IP 0.5-4.0 µg for 1.0-3.0 mg of total protein lysate
Isotype: IgG	Full Name: aldehyde dehydrogenase 1 family, member A2	IHC 1:50-1:500
Immunogen Catalog Number: AG5062	Calculated MW: 518 aa, 57 kDa	
	Observed MW: 53-57 kDa	

Applications

Tested Applications: IHC, IP, WB, ELISA	Positive Controls: WB : K-562 cells, mouse testis tissue
Cited Applications: IHC, WB	IP : mouse testis tissue,
Species Specificity: human, mouse, rat	IHC : human testis tissue,
Cited Species: human, rat, mouse	

Note-IHC: suggested antigen retrieval with TE buffer pH 9.0; (*) Alternatively, antigen retrieval may be performed with citrate buffer pH 6.0

Background Information

ALDH1A2(aldehyde dehydrogenase family 1 member A2) is also named as RALDH2(retinal dehydrogenase 2) and belongs to the aldehyde dehydrogenase family. It is a cytosolic homotetramer(56.7 kDa subunits) exhibiting complex expression patterns throughout embryonic development. ALDH1A2 plays a role in retinoid metabolism during embryonic development where it is considered to be the major retinoic acid-synthesizing enzyme during early embryogenesis(PMID:20735668). Its expression is reduced in primary prostate tumors compared with normal prostate tissue suggested that it is normally expressed in the epithelial compartment of prostate tissue(PMID:16166285).It has 2 isoforms produced by alternative splicing.

Notable Publications

Author	Pubmed ID	Journal	Application
Bilbija Dusan D	23028599	PLoS One	WB
My-Thanh Beedle	30247516	Biol Reprod	IHC
Carlos J Diaz Osterman	31478830	Elife	WB

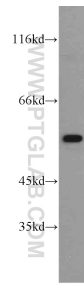
Storage

Storage:
Store at -20°C. Stable for one year after shipment.
Storage Buffer:
PBS with 0.02% sodium azide and 50% glycerol pH 7.3.
Aliquoting is unnecessary for -20°C storage

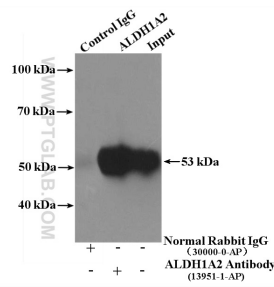
For technical support and original validation data for this product please contact:
T: 4006900926 E: Proteintech-CN@ptglab.com W: ptgcn.com

This product is exclusively available under Proteintech Group brand and is not available to purchase from any other manufacturer.

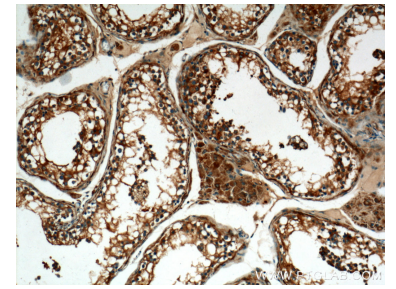
Selected Validation Data



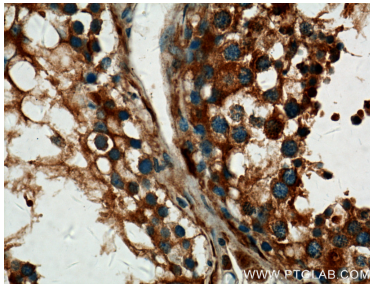
K-562 cells were subjected to SDS PAGE followed by western blot with 13951-1-AP (ALDH1A2 antibody) at dilution of 1:1000 incubated at room temperature for 1.5 hours.



IP result of anti-ALDH1A2 (IP:13951-1-AP, 4ug; Detection:13951-1-AP 1:300) with mouse testis tissue lysate 4400ug.



Immunohistochemical analysis of paraffin-embedded human testis tissue slide using 13951-1-AP (ALDH1A2 Antibody) at dilution of 1:200 (under 10x lens).



Immunohistochemical analysis of paraffin-embedded human testis tissue slide using 13951-1-AP (ALDH1A2 Antibody) at dilution of 1:200 (under 40x lens).