

For Research Use Only

# EMB Polyclonal antibody

Catalog Number: 13946-1-AP



## Basic Information

<b>Catalog Number:</b> 13946-1-AP	<b>GenBank Accession Number:</b> BC059398	<b>Purification Method:</b> Antigen affinity purification
<b>Size:</b> 600 µg/ml	<b>GeneID (NCBI):</b> 133418	<b>Recommended Dilutions:</b> WB 1:500-1:2000 IHC 1:50-1:500
<b>Source:</b> Rabbit	<b>UNIPROT ID:</b> Q6PCB8	
<b>Isotype:</b> IgG	<b>Full Name:</b> embigin homolog (mouse)	
<b>Immunogen Catalog Number:</b> AG5031	<b>Calculated MW:</b> 37 kDa	
	<b>Observed MW:</b> 70 kDa	

## Applications

### Tested Applications:

IHC, WB, ELISA

### Species Specificity:

human, mouse

**Note-IHC: suggested antigen retrieval with TE buffer pH 9.0; (\*) Alternatively, antigen retrieval may be performed with citrate buffer pH 6.0**

### Positive Controls:

WB : HeLa cells, mouse skeletal muscle tissue

IHC : mouse testis tissue,

## Background Information

EMB, also named as Embigin, is a 327 amino acid protein, which contains two Ig-like V-type (immunoglobulin-like) domains. EMB as a membrane protein may function as a regulator of cell/ECM interactions during development and in the homeostasis of normal adult tissues. EMB is a transmembrane glycoprotein with a protein component of 34 kDa, but western blot analysis of embigin in mouse soleus muscles detects a glycosylated full-length protein with an molecular mass of 70 kDa. (PMID: 19164284)

## Storage

### Storage:

Store at -20°C. Stable for one year after shipment.

### Storage Buffer:

PBS with 0.02% sodium azide and 50% glycerol pH 7.3.

Aliquoting is unnecessary for -20°C storage

For technical support and original validation data for this product please contact:

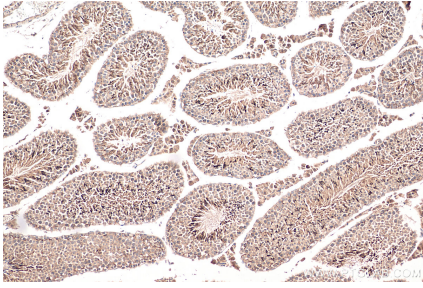
T: 4006900926

E: [Proteintech-CN@ptglab.com](mailto:Proteintech-CN@ptglab.com)

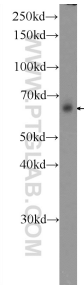
W: [ptgcn.com](http://ptgcn.com)

**This product is exclusively available under Proteintech Group brand and is not available to purchase from any other manufacturer.**

## Selected Validation Data



Immunohistochemical analysis of paraffin-embedded mouse testis tissue slide using 13946-1-AP (EMB antibody) at dilution of 1:200 (under 10x lens). Heat mediated antigen retrieval with Tris-EDTA buffer (pH 9.0).



HeLa cells were subjected to SDS PAGE followed by western blot with 13946-1-AP (EMB Antibody) at dilution of 1:1000 incubated at room temperature for 1.5 hours.