

For Research Use Only

# GPD1 Polyclonal antibody

Catalog Number: 13451-1-AP **6 Publications**



## Basic Information

**Catalog Number:**

13451-1-AP

**Size:**

450 µg/ml

**Source:**

Rabbit

**Isotype:**

IgG

**Immunogen Catalog Number:**

AG4278

**GenBank Accession Number:**

BC032234

**GeneID (NCBI):**

2819

**UNIPROT ID:**

P21695

**Full Name:**

glycerol-3-phosphate dehydrogenase 1 (soluble)

**Calculated MW:**

349 aa, 38 kDa

**Observed MW:**

32-42 kDa

**Purification Method:**

Antigen affinity purification

**Recommended Dilutions:**

WB 1:500-1:3000

IF 1:20-1:200

## Applications

**Tested Applications:**

IF/ICC, WB, ELISA

**Cited Applications:**

IF, IHC, WB

**Species Specificity:**

human, mouse, rat

**Cited Species:**

human, rat, mouse

**Positive Controls:**

WB: mouse liver tissue, HepG2 cells, mouse heart tissue, rat liver tissue

IF: HepG2 cells,

## Background Information

### Notable Publications

Author	Pubmed ID	Journal	Application
Shiqi Wu	35749365	Proc Natl Acad Sci U S A	WB
Wenlong Zhang	35836291	J Hematol Oncol	IHC
Zilv Luo	35988808	Cell Signal	WB, IHC, IF

## Storage

**Storage:**

Store at -20°C. Stable for one year after shipment.

**Storage Buffer:**

PBS with 0.02% sodium azide and 50% glycerol pH 7.3.

Aliquoting is unnecessary for -20°C storage

For technical support and original validation data for this product please contact:

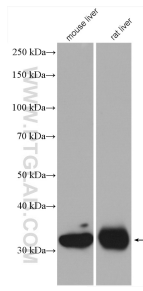
T: 4006900926

E: Proteintech-CN@ptglab.com

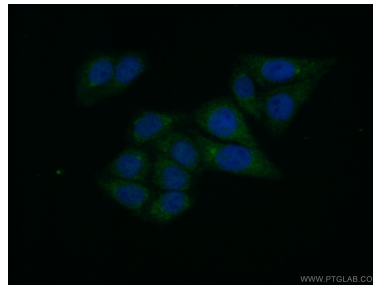
W: ptgcn.com

**This product is exclusively available under Proteintech Group brand and is not available to purchase from any other manufacturer.**

## Selected Validation Data



Various lysates were subjected to SDS PAGE followed by western blot with 13451-1-AP (GPD1 antibody) at dilution of 1:1500 incubated at room temperature for 1.5 hours.



Immunofluorescent analysis of (10% Formaldehyde) fixed HepG2 cells using 13451-1-AP (GPD1 antibody) at dilution of 1:50 and Alexa Fluor 488-conjugated AffiniPure Goat Anti-Rabbit IgG(H+L).