

For Research Use Only

LAIR1 Polyclonal antibody

Catalog Number: 13297-1-AP



Basic Information

Catalog Number: 13297-1-AP	GenBank Accession Number: BC027899	Purification Method: Antigen affinity purification
Size: 200 µg/ml	GeneID (NCBI): 3903	Recommended Dilutions: WB 1:1000-1:8000
Source: Rabbit	UNIPROT ID: Q6GTX8	
Isotype: IgG	Full Name: leukocyte-associated immunoglobulin-like receptor 1	
Immunogen Catalog Number: AG4021	Calculated MW: 287 aa, 31 kDa	
	Observed MW: 40-50 kDa	

Applications

Tested Applications: WB, ELISA	Positive Controls: WB : THP-1 cells,
Species Specificity: human	

Background Information

Leukocyte-associated immunoglobulin-like receptor 1 (LAIR1) is a transmembrane glycoprotein with a single immunoglobulin-like domain and a cytoplasmic tail containing two immune receptor tyrosine-based inhibitory motifs (PMID: 9285412). LAIR1 is expressed on the majority of human PBMCs, including NK, T, B, monocytes, and dendritic cells, as well as the majority of thymocytes (PMID: 10229813). It functions as an inhibitory receptor that plays a constitutive negative regulatory role on cytolytic function of NK cells, B cells and T cells. LAIR1 is a collagen receptor (PMID: 16754721). Tumor-expressed collagens can modulate immune cell function through the inhibitory collagen receptor LAIR1 (PMID: 21955987).

Storage

Storage:
Store at -20°C. Stable for one year after shipment.
Storage Buffer:
PBS with 0.02% sodium azide and 50% glycerol pH 7.3.
Aliquoting is unnecessary for -20°C storage

For technical support and original validation data for this product please contact:

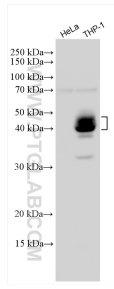
T: 4006900926

E: Proteintech-CN@ptglab.com

W: ptgcn.com

This product is exclusively available under Proteintech Group brand and is not available to purchase from any other manufacturer.

Selected Validation Data



HeLa cells (LAIR1 negative) and THP-1 cells were subjected to SDS PAGE followed by western blot with 13297-1-AP (LAIR1 antibody) at dilution of 1:4000 incubated at room temperature for 1.5 hours.