

For Research Use Only

# ADH6 Polyclonal antibody

Catalog Number: 13288-2-AP



## Basic Information

<b>Catalog Number:</b> 13288-2-AP	<b>GenBank Accession Number:</b> BC039065	<b>Purification Method:</b> Antigen affinity purification
<b>Size:</b> 700 µg/ml	<b>GeneID (NCBI):</b> 130	<b>Recommended Dilutions:</b> WB 1:2000-1:12000
<b>Source:</b> Rabbit	<b>UNIPROT ID:</b> P28332	IHC 1:1000-1:4000
<b>Isotype:</b> IgG	<b>Full Name:</b> alcohol dehydrogenase 6 (class V)	IF 1:20-1:200
<b>Immunogen Catalog Number:</b> AG3984	<b>Calculated MW:</b> 368 aa, 39 kDa	
	<b>Observed MW:</b> 39 kDa	

## Applications

**Tested Applications:**  
IF/ICC, IHC, WB, ELISA

**Species Specificity:**  
human, mouse, rat

**Note-IHC: suggested antigen retrieval with TE buffer pH 9.0; (\*) Alternatively, antigen retrieval may be performed with citrate buffer pH 6.0**

**Positive Controls:**

**WB :** mouse liver tissue, human liver tissue, rat liver tissue

**IHC :** human liver tissue, mouse kidney tissue, mouse liver tissue, rat kidney tissue, rat liver tissue

**IF :** MCF-7 cells,

## Background Information

### Storage

**Storage:**  
Store at -20°C. Stable for one year after shipment.  
**Storage Buffer:**  
PBS with 0.02% sodium azide and 50% glycerol pH 7.3.  
Aliquoting is unnecessary for -20°C storage

For technical support and original validation data for this product please contact:

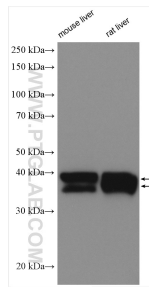
T: 4006900926

E: [Proteintech-CN@ptglab.com](mailto:Proteintech-CN@ptglab.com)

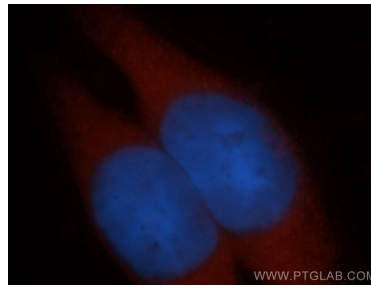
W: [ptgcn.com](http://ptgcn.com)

**This product is exclusively available under Proteintech Group brand and is not available to purchase from any other manufacturer.**

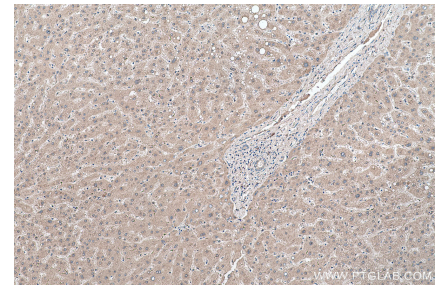
## Selected Validation Data



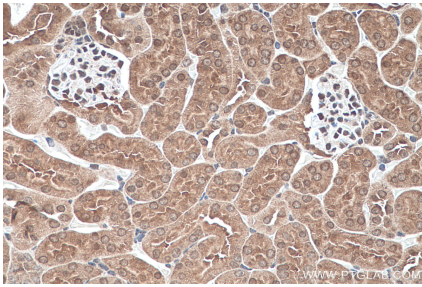
Various lysates were subjected to SDS PAGE followed by western blot with 13288-2-AP (ADH6 antibody) at dilution of 1:6000 incubated at room temperature for 1.5 hours.



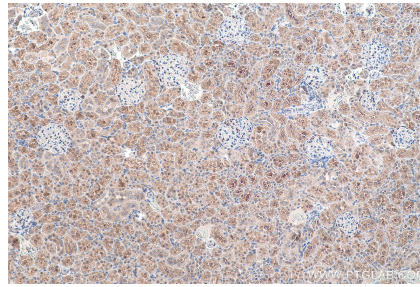
Immunofluorescent analysis of MCF-7 cells, using ADH6 antibody 13288-2-AP at 1:50 dilution and Rhodamine-labeled goat anti-rabbit IgG (red). Blue pseudocolor = DAPI (fluorescent DNA dye).



Immunohistochemical analysis of paraffin-embedded human liver tissue slide using 13288-2-AP (ADH6 antibody) at dilution of 1:2000 (under 10x lens). Heat mediated antigen retrieval with Tris-EDTA buffer (pH 9.0).



Immunohistochemical analysis of paraffin-embedded mouse kidney tissue slide using 13288-2-AP (ADH6 antibody) at dilution of 1:1000 (under 40x lens). Heat mediated antigen retrieval with Tris-EDTA buffer (pH 9.0).



Immunohistochemical analysis of paraffin-embedded rat kidney tissue slide using 13288-2-AP (ADH6 antibody) at dilution of 1:1000 (under 10x lens). Heat mediated antigen retrieval with Tris-EDTA buffer (pH 9.0).