

For Research Use Only

# ARH Polyclonal antibody

Catalog Number: 13213-1-AP

Featured Product

1 Publications



## Basic Information

Catalog Number:

13213-1-AP

Size:

500 µg/ml

Source:

Rabbit

Isotype:

IgG

Immunogen Catalog Number:

AG4006

GenBank Accession Number:

BC029770

GeneID (NCBI):

26119

UNIPROT ID:

Q55W96

Full Name:

low density lipoprotein receptor  
adaptor protein 1

Calculated MW:

308 aa, 34 kDa

Observed MW:

34 kDa

Purification Method:

Antigen affinity purification

Recommended Dilutions:

WB 1:2000-1:10000

IHC 1:50-1:500

## Applications

Tested Applications:

IHC, WB, ELISA

Cited Applications:

WB

Species Specificity:

human

Cited Species:

mouse

**Note-IHC: suggested antigen retrieval with  
TE buffer pH 9.0; (\*) Alternatively, antigen  
retrieval may be performed with citrate  
buffer pH 6.0**

Positive Controls:

WB : HEK-293 cells, HeLa cells, K-562 cells

IHC : human liver cancer tissue,

## Background Information

### Notable Publications

Author	Pubmed ID	Journal	Application
Colin T Stomberski	36288700	Cell Rep	WB

## Storage

Storage:

Store at -20°C. Stable for one year after shipment.

Storage Buffer:

PBS with 0.02% sodium azide and 50% glycerol pH 7.3.

Aliquoting is unnecessary for -20°C storage

For technical support and original validation data for this product please contact:

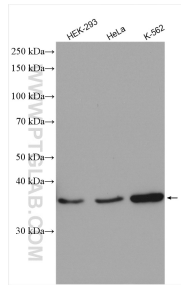
T: 4006900926

E: [Proteintech-CN@ptglab.com](mailto:Proteintech-CN@ptglab.com)

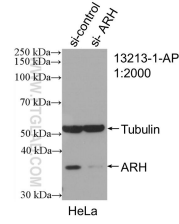
W: [ptgcn.com](http://ptgcn.com)

**This product is exclusively available under Proteintech Group brand and is not available to purchase from any other manufacturer.**

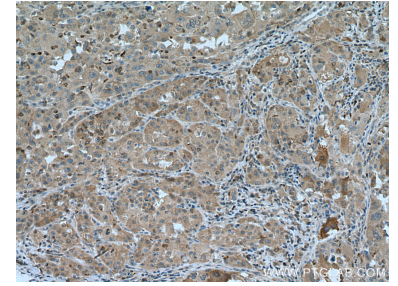
## Selected Validation Data



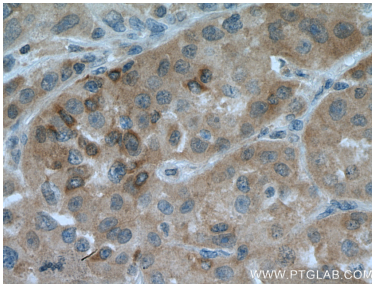
Various lysates were subjected to SDS PAGE followed by western blot with 13213-1-AP (ARH antibody) at dilution of 1:5000 incubated at room temperature for 1.5 hours.



WB result of ARH antibody (13213-1-AP; 1:2000; incubated at room temperature for 1.5 hours) with sh-Control and sh-ARH transfected HeLa cells.



Immunohistochemical analysis of paraffin-embedded human liver cancer tissue slide using 13213-1-AP (ARH antibody) at dilution of 1:200 (under 10x lens). Heat mediated antigen retrieval with Tris-EDTA buffer (pH 9.0).



Immunohistochemical analysis of paraffin-embedded human liver cancer tissue slide using 13213-1-AP (ARH antibody) at dilution of 1:200 (under 40x lens). Heat mediated antigen retrieval with Tris-EDTA buffer (pH 9.0).