

For Research Use Only

L-Plastin Polyclonal antibody

Catalog Number: 13025-1-AP

Featured Product

7 Publications



Basic Information

Catalog Number:

13025-1-AP

Size:

300 µg/ml

Source:

Rabbit

Isotype:

IgG

Immunogen Catalog Number:

AG3571

GenBank Accession Number:

BC010271

GeneID (NCBI):

3936

UNIPROT ID:

P13796

Full Name:

lymphocyte cytosolic protein 1 (L-plastin)

Calculated MW:

627 aa, 64 kDa

Observed MW:

64-70 kDa

Purification Method:

Antigen affinity purification

Recommended Dilutions:

WB 1:500-1:2000

IP 0.5-4.0 µg for 1.0-3.0 mg of total protein lysate

IHC 1:20-1:200

Applications

Tested Applications:

FC, IHC, IP, WB, ELISA

Cited Applications:

FC, IHC, WB

Species Specificity:

human, mouse, rat

Cited Species:

hamster, human, monkey, mouse

Note-IHC: suggested antigen retrieval with TE buffer pH 9.0; (*) Alternatively, antigen retrieval may be performed with citrate buffer pH 6.0

Positive Controls:

WB: Jurkat cells, K-562 cells, mouse spleen tissue

IP: Jurkat cells,

IHC: human lymphoma tissue, human small intestine tissue

Background Information

Notable Publications

Author	Pubmed ID	Journal	Application
Wenfang Bao	35578065	Pharm Res	WB,FC
Hui He	24442187	Mol Biosyst	IHC
Man-Jing Jiang	34120311	J Nat Med	WB

Storage

Storage:

Store at -20°C. Stable for one year after shipment.

Storage Buffer:

PBS with 0.02% sodium azide and 50% glycerol pH 7.3.

Aliquoting is unnecessary for -20°C storage

For technical support and original validation data for this product please contact:

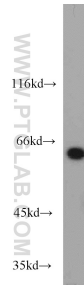
T: 4006900926

E: Proteintech-CN@ptglab.com

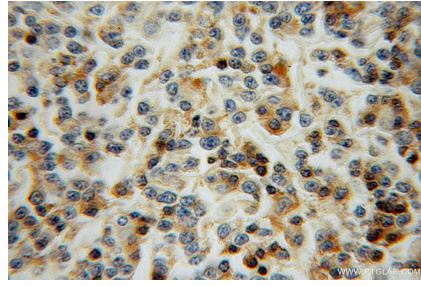
W: ptgcn.com

This product is exclusively available under Proteintech Group brand and is not available to purchase from any other manufacturer.

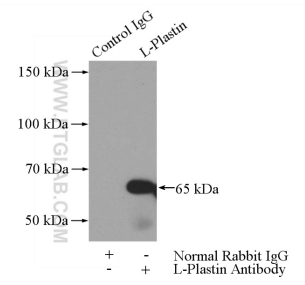
Selected Validation Data



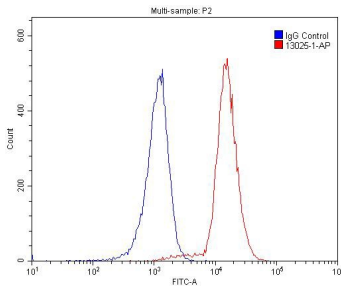
Jurkat cells were subjected to SDS PAGE followed by western blot with 13025-1-AP (L-Plastin antibody) at dilution of 1:1000 incubated at room temperature for 1.5 hours.



Immunohistochemical analysis of paraffin-embedded human lymphoma using 13025-1-AP (L-Plastin antibody) at dilution of 1:50 (under 10x lens).



IP result of anti-L-Plastin (IP:13025-1-AP, 4ug; Detection:13025-1-AP 1:1000) with Jurkat cells lysate 2400ug.



1X10⁶ Raji cells were stained with 0.2ug L-Plastin antibody (13025-1-AP, red) and control antibody (blue). Cells were fixed with 4% PFA and permeabilized with 0.1% Triton X-100. Alexa Fluor 488-conjugated AffiniPure Goat Anti-Rabbit IgG(H+L) with dilution 1:1500.