

ETV5 Polyclonal antibody

Catalog Number: 13011-1-AP

Featured Product

22 Publications

Basic Information

Catalog Number:

13011-1-AP

Size:

1000 µg/ml

Source:

Rabbit

Isotype:

IgG

Immunogen Catalog Number:

AG3708

GenBank Accession Number:

BC007333

GeneID (NCBI):

2119

UNIPROT ID:

P41161

Full Name:

ets variant 5

Calculated MW:

510 aa, 58 kDa

Observed MW:

70 kDa

Purification Method:

Antigen affinity purification

Recommended Dilutions:

WB 1:1000-1:6000

IHC 1:1000-1:4000

IF 1:50-1:500

Applications

Tested Applications:

IF/ICC, IHC, WB, ELISA

Cited Applications:

WB, IF, IHC, CoIP, ChIP

Species Specificity:

human, mouse, rat

Cited Species:

human, mouse

Note-IHC: suggested antigen retrieval with TE buffer pH 9.0; (*) Alternatively, antigen retrieval may be performed with citrate buffer pH 6.0

Positive Controls:

WB : HeLa cells, HepG2 cells, MCF-7 cells, PC-3 cells, Raji cells

IHC : mouse brain tissue,

IF : PC-3 cells,

Background Information

ETS variant gene 5(ETV5) belongs to the ETS oncogene family that shares a conserved peptide, ETS domain, which mediates sequence-specific DNA binding. ETV5 is a transcription factor and is required for spermatogonial stem cell self-renewal. ETV5 can be negatively regulated by COP1, a tumor suppressor. Also it has a role in branching morphogenesis in the developing kidney

Notable Publications

Author	Pubmed ID	Journal	Application
Zhuo Mao	33093014	Diabetes	WB, CoIP
Daniel S Kim	34650237	Nat Genet	ChIP
Rebecca Caeser	34712921	iScience	WB

Storage

Storage:

Store at -20°C. Stable for one year after shipment.

Storage Buffer:

PBS with 0.02% sodium azide and 50% glycerol pH 7.3.

Aliquoting is unnecessary for -20°C storage

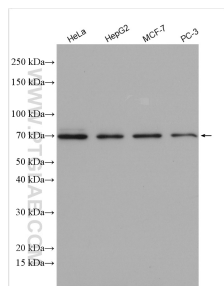
For technical support and original validation data for this product please contact:

T: 4006900926

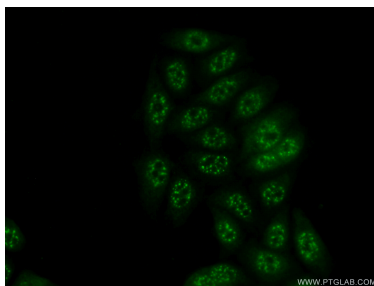
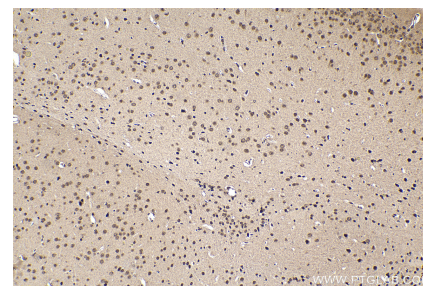
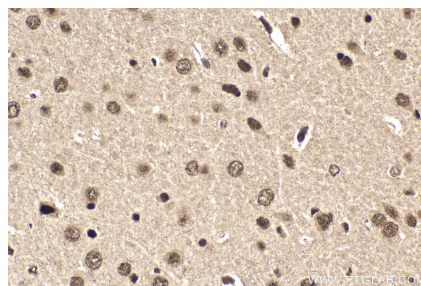
E: Proteintech-CN@ptglab.comW: ptgcn.com

This product is exclusively available under Proteintech Group brand and is not available to purchase from any other manufacturer.

Selected Validation Data



Various lysates were subjected to SDS PAGE followed by western blot with 13011-1-AP (ETV5 antibody) at dilution of 1:3000 incubated at room temperature for 1.5 hours.



Immunofluorescent analysis of (10% Formaldehyde) fixed PC-3 cells using 13011-1-AP (ETV5 antibody) at dilution of 1:50 and Alexa Fluor 488-conjugated AffiniPure Goat Anti-Rabbit IgG(H+L).